



# CONSTRUCTION DETAILS

PRODUCT:

## CLADDING

AREA:

ENGINEERING

ELABORATED:

V.G.C.

REVISED:

VERSION:

V11 220117

PAGE:

2

### LITECON CLADDING

02	INDEX
03	BEFORE STARTING
04	LITECON CLADDING DIMENSIONS
05	TYPICAL WOOD STUD
06	BASE INSTALLATION WITH BRICK LEDGE OR STEEL ANGLE
07	WALLS FLASHING, WEATHER BARRIER, WEEPS
08	BASE INSTALLATION WITH BRICK LEDGE
09	BASE INSTALLATION WITH STEEL ANGLE
10	WALLS - FIRST ROW
11	WALLS - SUBSEQUENT ROWS
12	WALLS - SUBSEQUENT ROWS
13	WALLS - FASTENERS DISTRIBUTION
14	WALLS - FASTENERS DISTRIBUTION SECTION B
15	FASTENERS SPECIFICATION FOR WOOD STUD
16	FASTENERS SPECIFICATION FOR STEEL STUD
17	CEILING FINISHES
18	OPENINGS - WINDOWS
19	OPENINGS - WINDOWS - SECTION A
20	OPENINGS - WINDOWS - SECTION B & C
21	OPENINGS - DOORS
22	OPENINGS - DOORS - SECTION A & B
23	FINAL STEPS - FIBERGLASS MESH
24	FINAL STEPS - FINISHES
25	AIRCRETE MORTAR ADHESIVE
26	FAQ'S
27	FAQ'S
28	PLACEMENT OF ADDITIONAL STUD
29	CRACKS REPAIRING
30	FISSURE REPAIRING
31	CROOKED CORNER REPAIRING

## NOTES

## CONSTRUCTION DETAILS



PRODUCT:

CLADDING

AREA:

ENGINEERING

ELABORATED:

V.G.C.

REVISED:

VERSION:

V11 220117

PAGE:

3

# BEFORE STARTING

- 1.- BLUEPRINTS
- 2.- ELECTRIC DRILL
- 3.- GROUT MIXING PADDLE
- 4.- A 5 GAL. EMPTY BUCKET
- 5.- RUBBER HAMMER
- 6.- BUBBLE OR LASER KNIFE
- 7.- JOINT KNIFE
- 8.- CIRCULAR SAW
- 9.- BATTERY SCREWDRIVER
- 10.- ELECTRIC POWER 110/220V
- 11.- TAP WATER
- 12.- TAMLYNWRAP Drainable Wrap OR TYVEK Drainwrap IS RECOMMENDED AS WEATHER BARRIER
- 13.- BRICK LEDGE, COATED STEEL ANGLE OR STAINLESS STEEL ANGLE 2" x 2"
- 14.- BENT COPPER, STAINLESS STEEL, ALUMINUM OR PLASTIC FLASHING
- 15.- MTIdry IS RECOMMENDED AS A WALL OPENING WEEPS
- 16.- #10 3 1/2" FASTENERS: THE TIP WILL DEPEND ON THE STUD (WOOD OR STEEL).IN BOTH CASES THE FASTENER SHOULD HAVE A COATING THAT PROVIDES CORROSION RESISTANCE
- 17.- LITECON CLADDING
- 18.- AIRCRETE MORTAR ADHESIVE
- 19.- FIBER GLASS MESH (SAINT-GOBAIN)
- 20.- GE ADVANCE SILICONE 2
- 21.- SILICONE CAULK AND BACKER ROAD

## NOTES

# CONSTRUCTION DETAILS



PRODUCT:

**CLADDING**

AREA:

ENGINEERING

ELABORATED:

V.G.C.

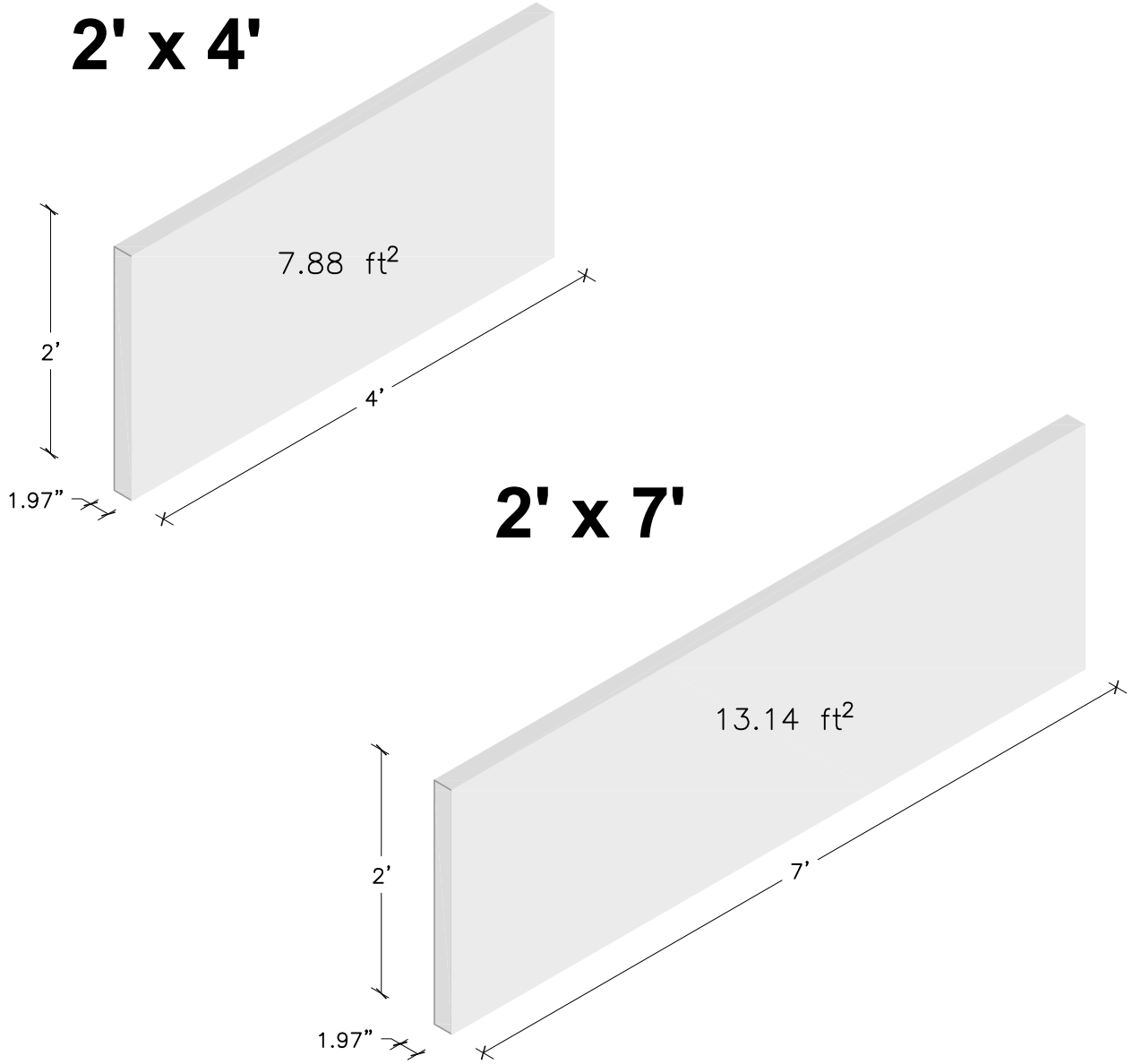
REVISED:

VERSION:

V11 220117

PAGE:

4



LITECON CLADDING DIMENSIONS

## NOTES

- 1.- LENGTH CAN BE ADJUSTED TO CUSTOMERS NEEDS (EVERY 0.2 INCHES) UP TO 120"
- 2.- THE NOMINAL SIZE OF THE LITECON CLADDING IS 2' X 4', THE ACTUAL SIZE IS 23.62" X 48.03"
- 3.- THE NOMINAL SIZE OF THE LITECON CALDDING IS 2' X 7', THE ACTUAL SIZE IS 23.62" X 80.11"

# CONSTRUCTION DETAILS



PRODUCT:

CLADDING

AREA:

ENGINEERING

ELABORATED:

V.G.C.

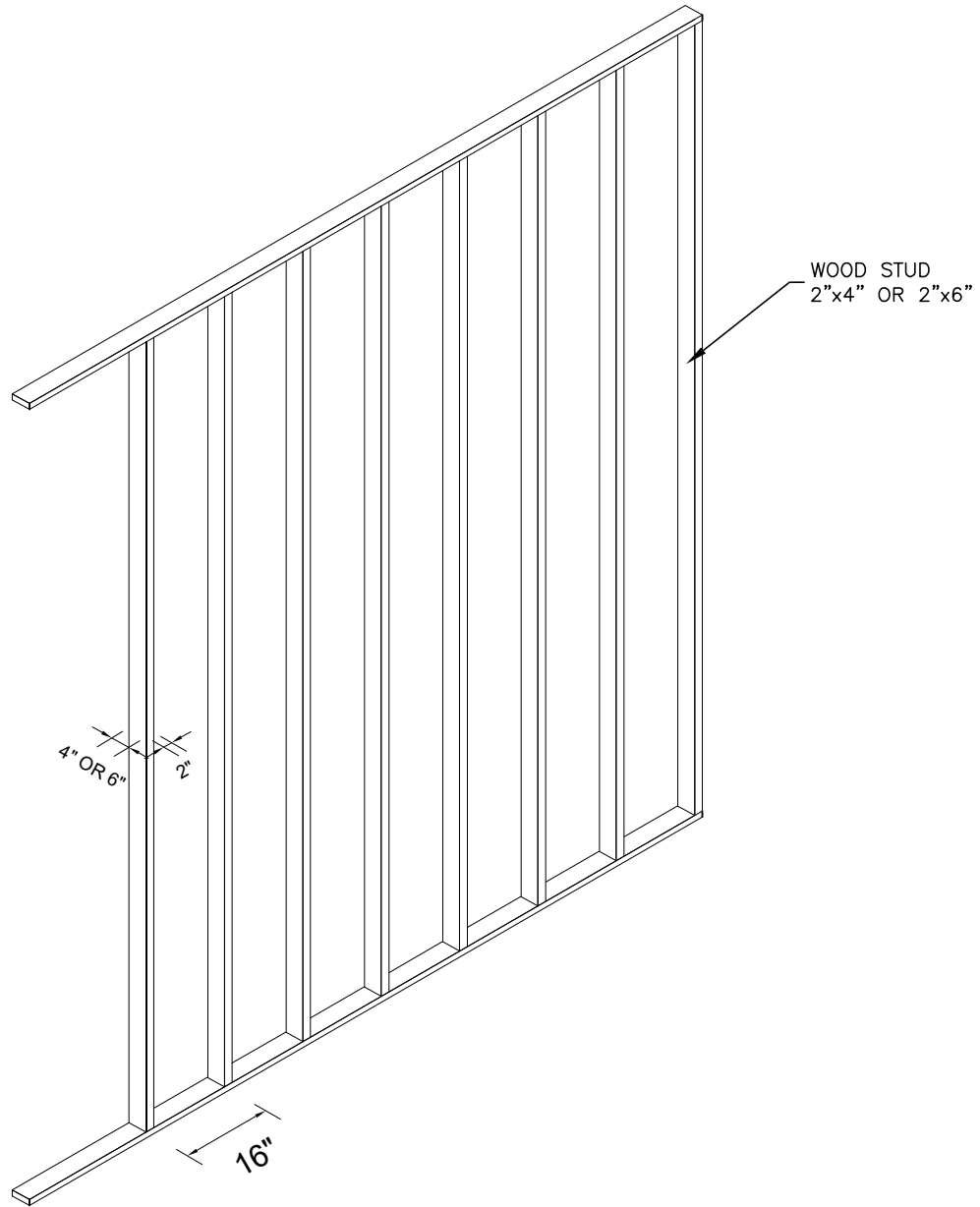
REVISED:

VERSION:

V11 220117

PAGE:

5



TYPICAL WOOD STUD

## NOTES

- 1.- THE NOMINAL SIZE OF FRAMING STUD IS 2" X 4", THE ACTUAL MEASURE IS 1 1/2" X 3 1/2"
- 2.- THE NOMINAL SIZE OF FRAMING STUD IS 2" X 6", THE ACTUAL MEASURE IS 1 1/2" X 5 1/2"

# CONSTRUCTION DETAILS



PRODUCT:

**CLADDING**

AREA:

**ENGINEERING**

ELABORATED:

**V.G.C.**

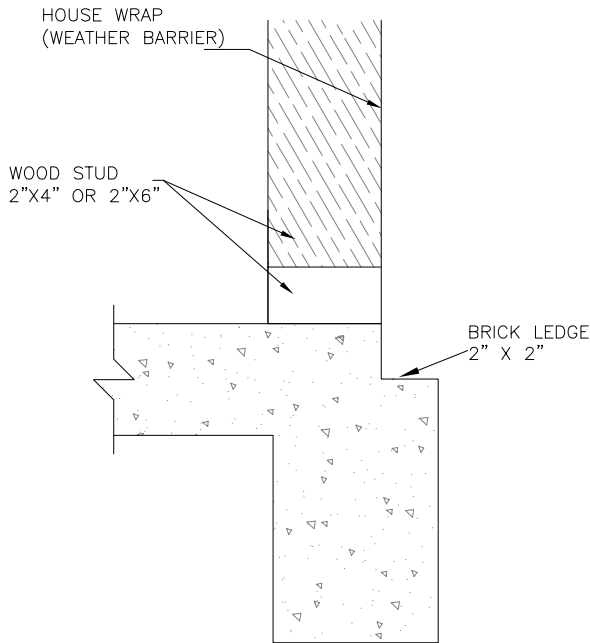
REVISED:

VERSION:

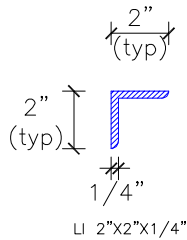
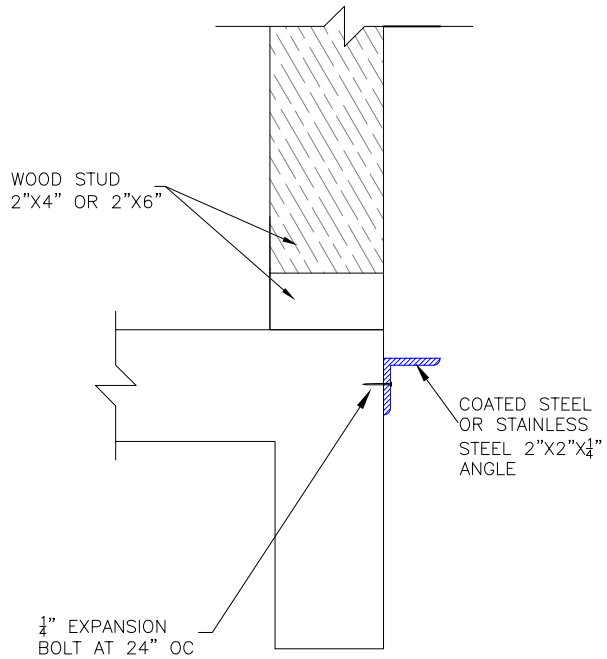
**V11 220117**

PAGE:

**6**



**BASE INSTALLATION  
WITH BRICK LEDGE  
OR STEEL ANGLE**



## NOTES

- 1.- A TYPE S MORTAR CAN BE USED FOR LEVELING
- 2.- THE LEVELER THICKNESS RANGE IS  $\frac{1}{16}$ " TO 1"
- 3.- **TAMLYNWRAP Drainable Wrap** OR **TYVEK DrainWrap** ARE RECOMMENDED AS A WEATHER BARRIER
- 4.- FLASHING (BENT COPPER, STAINLESS STEEL, ALUMINUM OR PLASTIC), CHECK THE MANUFACTURER'S INSTALLATION GUIDES
- 5.- FOR THE INSTALLATION OF THE WEATHER BARRIER, CHECK THE MANUFACTURER'S INSTALLATION GUIDES
- 6.- **MTIdry** IS RECOMMENDED AS A WALL OPENING WEEP, CHECK THE MANUFACTURER'S INSTALLATION GUIDES

# CONSTRUCTION DETAILS



PRODUCT:

## CLADDING

AREA:

ENGINEERING

ELABORATED:

V.G.C.

REVISED:

VERSION:

V11 220117

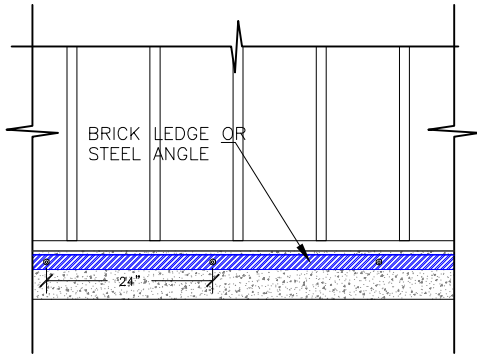
PAGE:

7

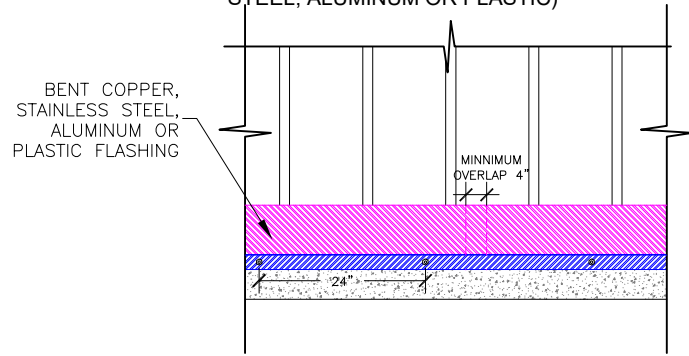
### WALLS

### FLASHING, WEATHER BARRIER, WEEPS

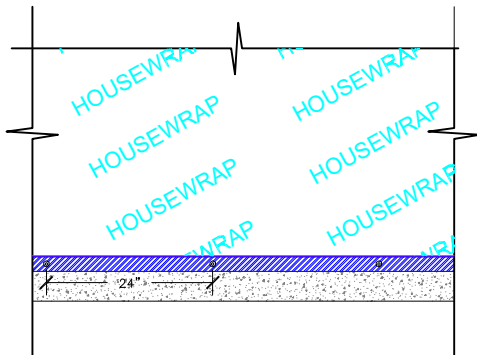
1.- BLOCK OUT FOR BRICK LEDGE OR INSTALL IRON ANGLE



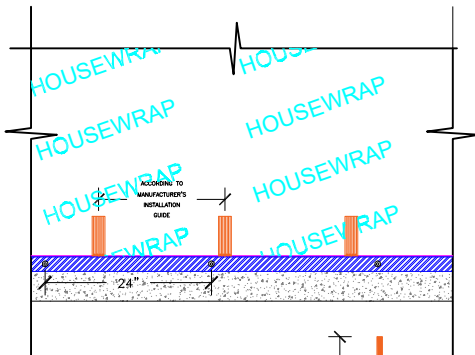
2.- INSTALL FLASHING (BENT COPPER, STAINLESS STEEL, ALUMINUM OR PLASTIC)



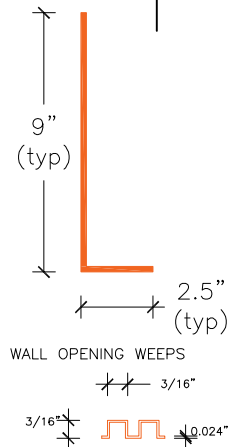
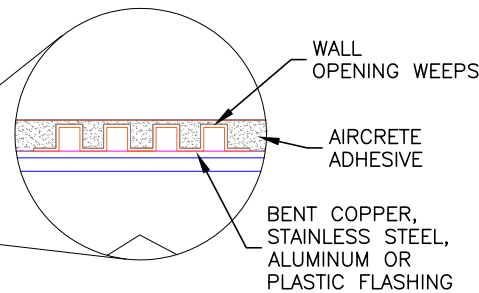
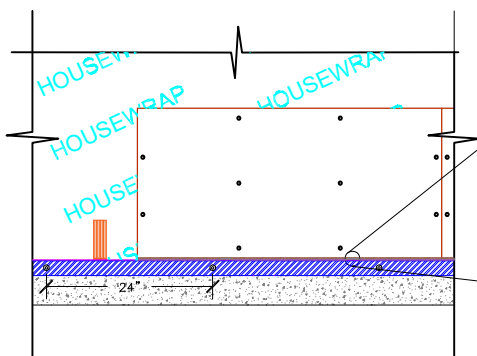
3.- INSTALL THE WEATHER BARRIER (HOUSEWRAP)



4.- INSTALL WALL OPENING WEEPS



5.- INSTALL LITECON CLADDING



### NOTES

- 1.- A TYPE S MORTAR CAN BE USED FOR LEVELING
- 2.- THE LEVELER THICKNESS RANGE IS  $\frac{1}{16}$ " TO 1"
- 3.- **TAMLYNWRAP Drainable Wrap** OR **TYVEK DrainWrap** ARE RECOMMENDED AS A WEATHER BARRIER
- 4.- FLASHING (BENT COPPER, STAINLESS STEEL, ALUMINUM OR PLASTIC), CHECK THE MANUFACTURER'S INSTALLATION GUIDES
- 5.- FOR THE INSTALLATION OF THE WEATHER BARRIER, CHECK THE MANUFACTURER'S INSTALLATION GUIDES
- 6.- **MTIdry** IS RECOMMENDED AS A WALL OPENING WEEP, CHECK THE MANUFACTURER'S INSTALLATION GUIDES

# CONSTRUCTION DETAILS



PRODUCT:

CLADDING

AREA:

ENGINEERING

ELABORATED:

V.G.C.

REVISED:

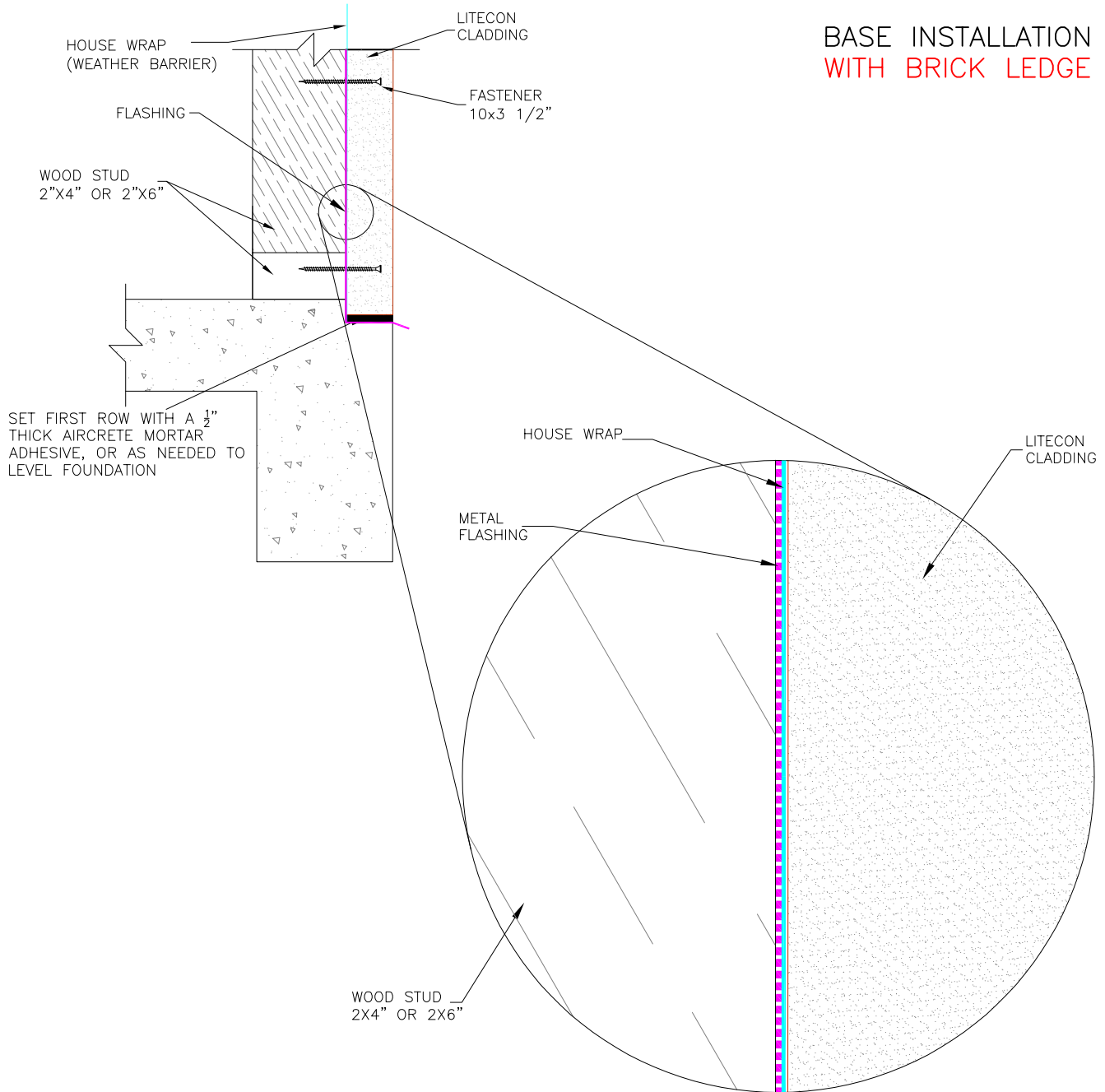
VERSION:

V11 220117

PAGE:

8

## BASE INSTALLATION WITH BRICK LEDGE



### NOTES

- 1.- A TYPE S MORTAR CAN BE USED FOR LEVELING
- 2.- THE LEVELER THICKNESS RANGE IS  $\frac{1}{16}$ " TO 1"
- 3.- **TAMLYNWRAP Drainable Wrap** OR **TYVEK DrainWrap** ARE RECOMMENDED AS A WEATHER BARRIER
- 4.- FLASHING (BENT COPPER, STAINLESS STEEL, ALUMINUM OR PLASTIC), CHECK THE MANUFACTURER'S INSTALLATION GUIDES
- 5.- FOR THE INSTALLATION OF THE WEATHER BARRIER, CHECK THE MANUFACTURER'S INSTALLATION GUIDES
- 6.- **MTIdry** IS RECOMMENDED AS A WALL OPENING WEEP, CHECK THE MANUFACTURER'S INSTALLATION GUIDES

# CONSTRUCTION DETAILS



PRODUCT:

**CLADDING**

AREA:

**ENGINEERING**

ELABORATED:

**V.G.C.**

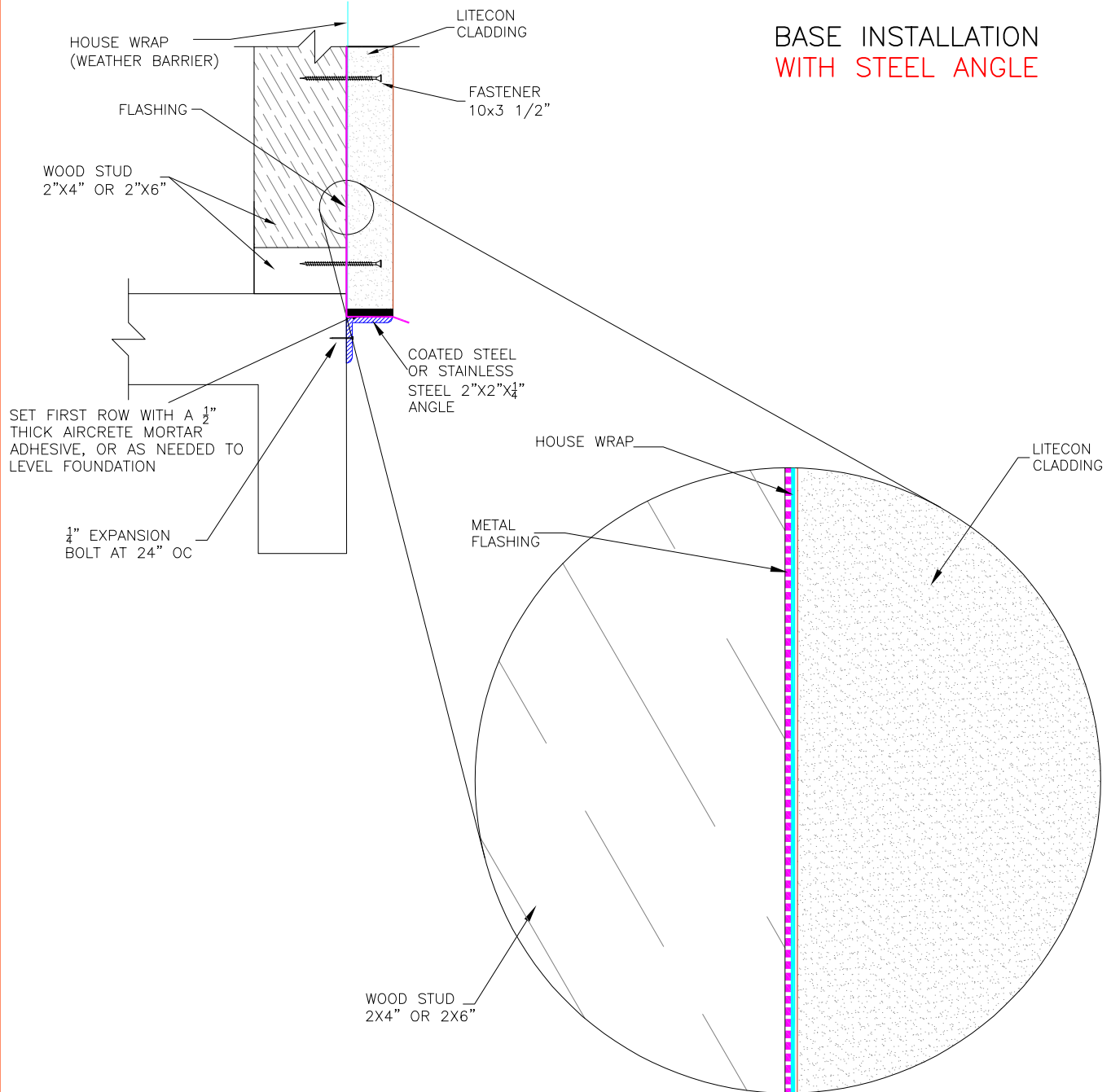
REVISED:

VERSION:

**V11 220117**

PAGE:

**9**



## BASE INSTALLATION WITH STEEL ANGLE

### NOTES

- 1.- A TYPE S MORTAR CAN BE USED FOR LEVELING
- 2.- THE LEVELER THICKNESS RANGE IS  $\frac{1}{16}$ " TO 1"
- 3.- **TAMLYNWRAP Drainable Wrap** OR **TYVEK DrainWrap** ARE RECOMMENDED AS A WEATHER BARRIER
- 4.- FLASHING (BENT COPPER, STAINLESS STEEL, ALUMINUM OR PLASTIC), CHECK THE MANUFACTURER'S INSTALLATION GUIDES
- 5.- FOR THE INSTALLATION OF THE WEATHER BARRIER, CHECK THE MANUFACTURER'S INSTALLATION GUIDES
- 6.- **MTIdry** IS RECOMMENDED AS A WALL OPENING WEEP, CHECK THE MANUFACTURER'S INSTALLATION GUIDES



# CONSTRUCTION DETAILS



PRODUCT:

CLADDING

AREA:

ENGINEERING

ELABORATED:

V.G.C.

REVISED:

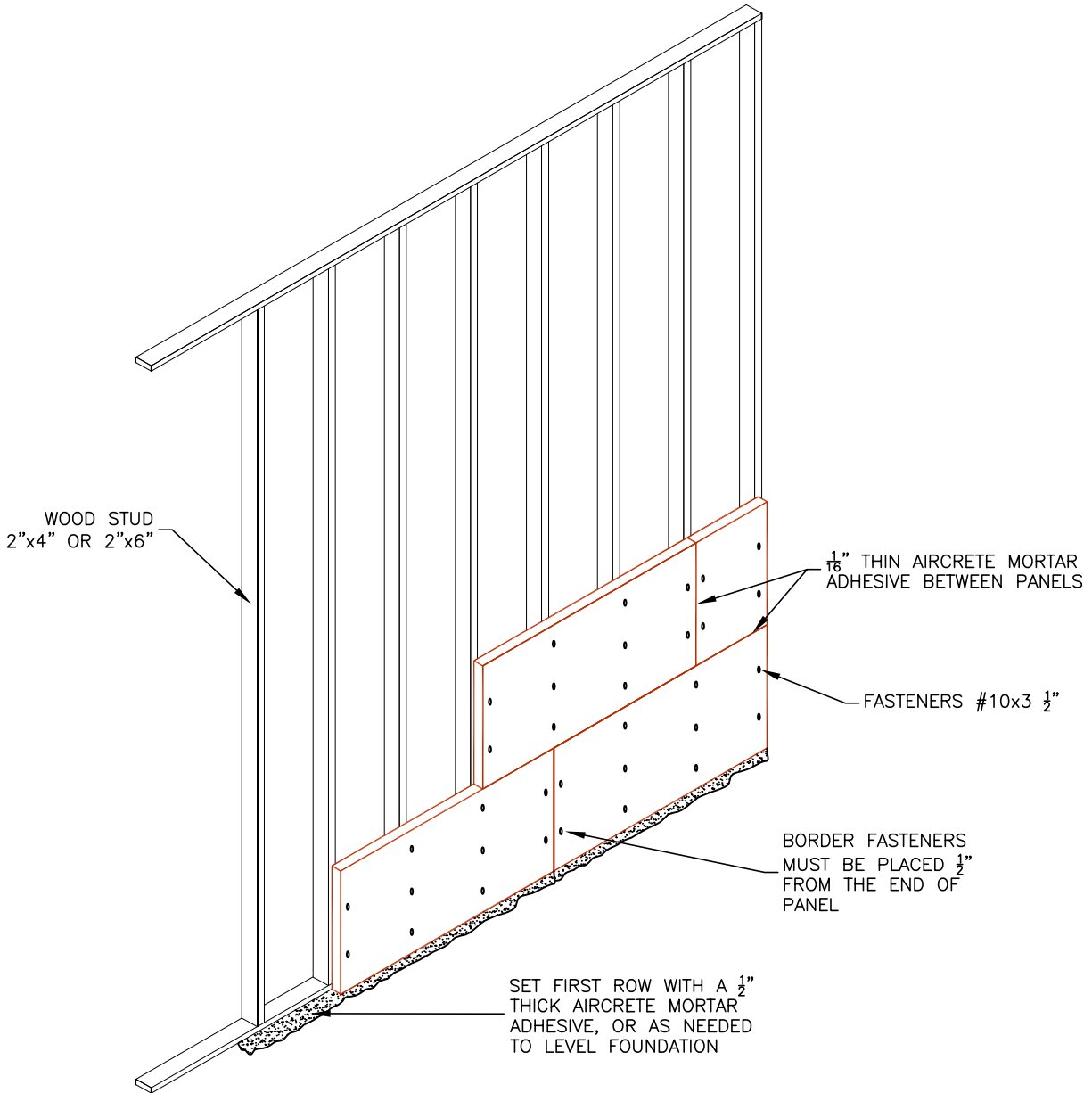
VERSION:

V11 220117

PAGE:

10

## WALLS FIRST ROW



### NOTES

- 1.- THE FIRST ROW CAN ALSO BE LEVELED WITH TRADITIONAL TYPE S MORTAR OR A MIX OF MORTAR AND AIRCRETE ADHESIVE
- 2.- THE  $\frac{1}{2}$ " GAP GENERATED BY THE FASTENER MUST BE FILLED WITH ADHESIVE MORTAR TO PREVENT WATER INTRUSION TO THE STUD

# CONSTRUCTION DETAILS



PRODUCT:

CLADDING

AREA:

ENGINEERING

ELABORATED:

V.G.C.

REVISED:

VERSION:

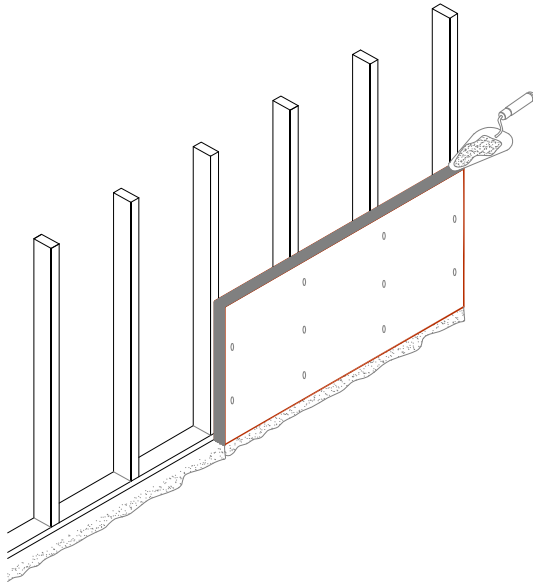
V11 220117

PAGE:

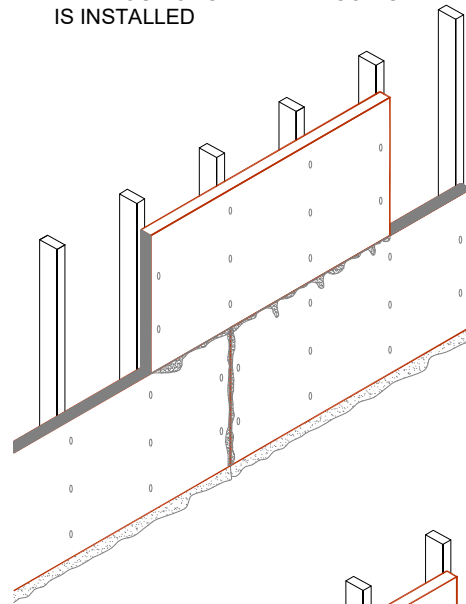
11

## WALLS SUBSEQUENT ROWS

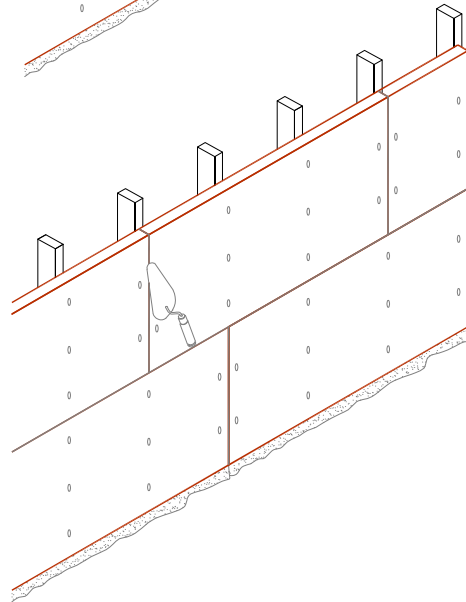
1.- APPLY AIRCRETE ADHESIVE BETWEEN THE MATING FACES



2.- APPLY ENOUGH AIRCRETE ADHESIVE SO THAT IT SPITS OUT ONCE THE LITECON CLADDING IS INSTALLED



3.- AFTER THE LITECON CLADDING IS INSTALLED SMOOTHEN THE AREA WHERE THE ADHESIVE SPAT OUT



### NOTES

- 1.- THE FIRST ROW CAN ALSO BE LEVELLED WITH TRADITIONAL TYPE S MORTAR OR A MIX OF MORTAR AND AIRCRETE ADHESIVE
- 2.- THE  $\frac{1}{2}$ " GAP GENERATED BY THE FASTENER MUST BE FILLED WITH ADHESIVE MORTAR TO PREVENT WATER INTRUSION TO THE STUD
- 3.-  $\frac{1}{16}$ " THIN AIRCRETE MORTAR ADHESIVE BETWEEN PANELS

# CONSTRUCTION DETAILS



PRODUCT:

CLADDING

AREA:

ENGINEERING

ELABORATED:

V.G.C.

REVISED:

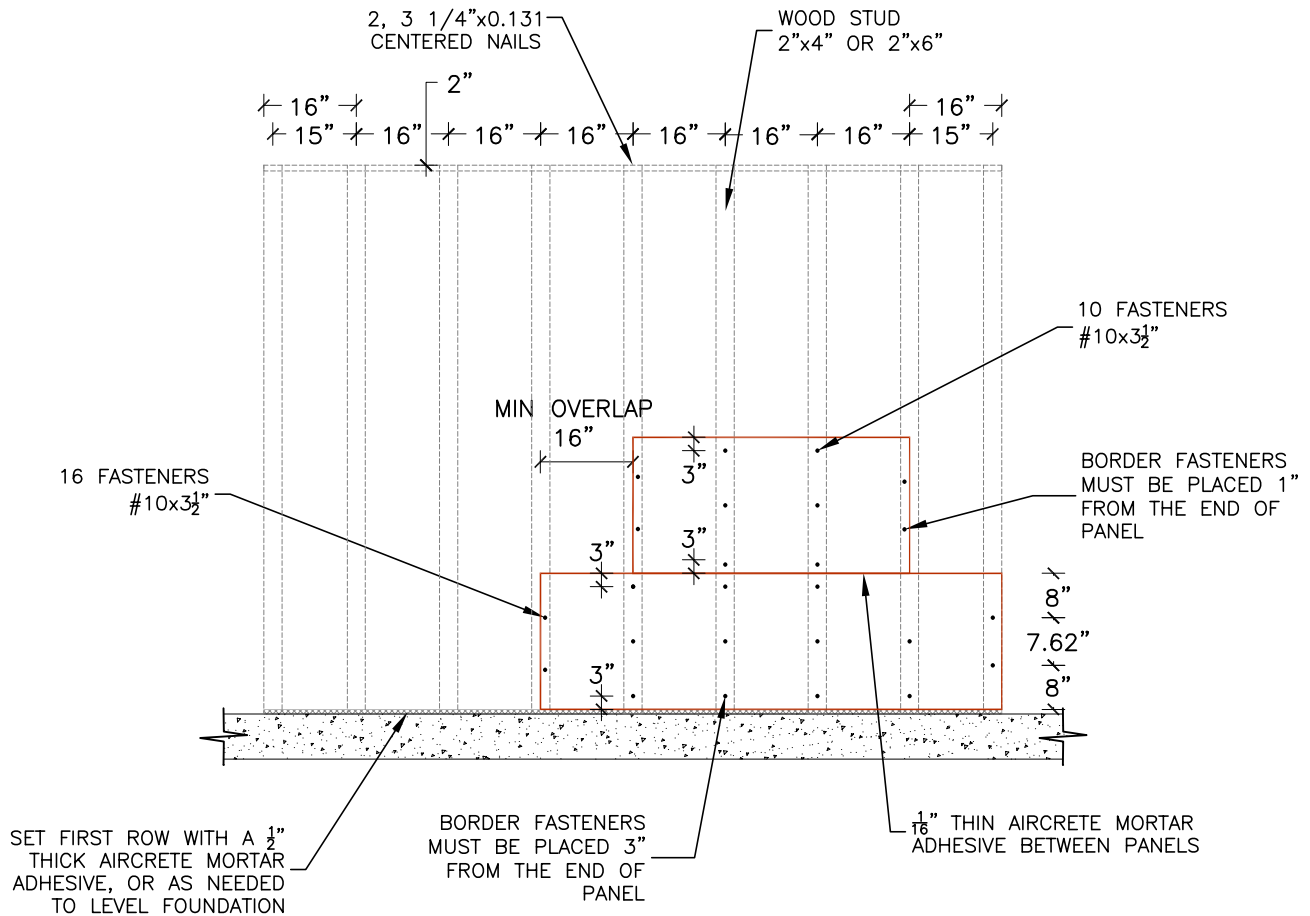
VERSION:

V11 220117

PAGE:

12

## WALLS SUBSEQUENT ROWS



### NOTES

- 1.- THE FIRST ROW CAN ALSO BE LEVELED WITH TRADITIONAL TYPE S MORTAR OR A MIX OF MORTAR AND AIRCRETE ADHESIVE
- 2.- THE 1/2" GAP GENERATED BY THE FASTENER MUST BE FILLED WITH ADHESIVE MORTAR TO PREVENT WATER INTRUSION TO THE STUD
- 3.- THE 2' X 4' PANEL MUST BE INSTALLED WITH 10 FASTENERS
- 4.- THE 2' X 7' PANEL MUST BE INSTALLED WITH 16 FASTENERS

# CONSTRUCTION DETAILS



PRODUCT:

**CLADDING**

AREA:

ENGINEERING

ELABORATED:

V.G.C.

REVISED:

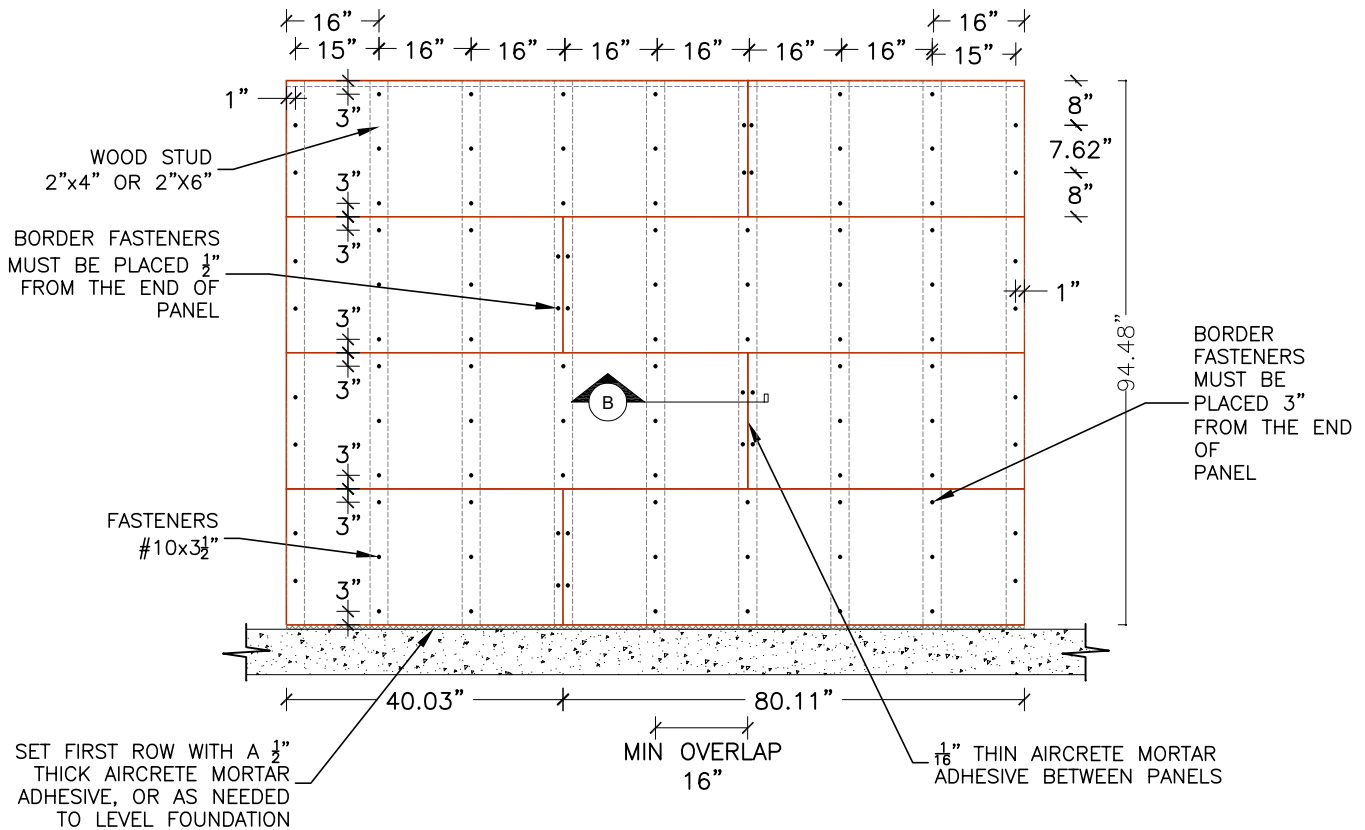
VERSION:

V11 220117

PAGE:

13

## WALLS FASTENERS DISTRIBUTION



### NOTES

- 1.- THE  $\frac{1}{2}$ " GAP GENERATED BY THE FASTENER MUST BE FILLED WITH ADHESIVE MORTAR TO PREVENT WATER INTRUSION TO THE STUD
- 2.- THE 2' X 4' PANEL MUST BE INSTALLED WITH 10 FASTENERS
- 3.- THE 2' X 7' PANEL MUST BE INSTALLED WITH 16 FASTENERS

# CONSTRUCTION DETAILS



PRODUCT:

CLADDING

AREA:

ENGINEERING

ELABORATED:

V.G.C.

REVISED:

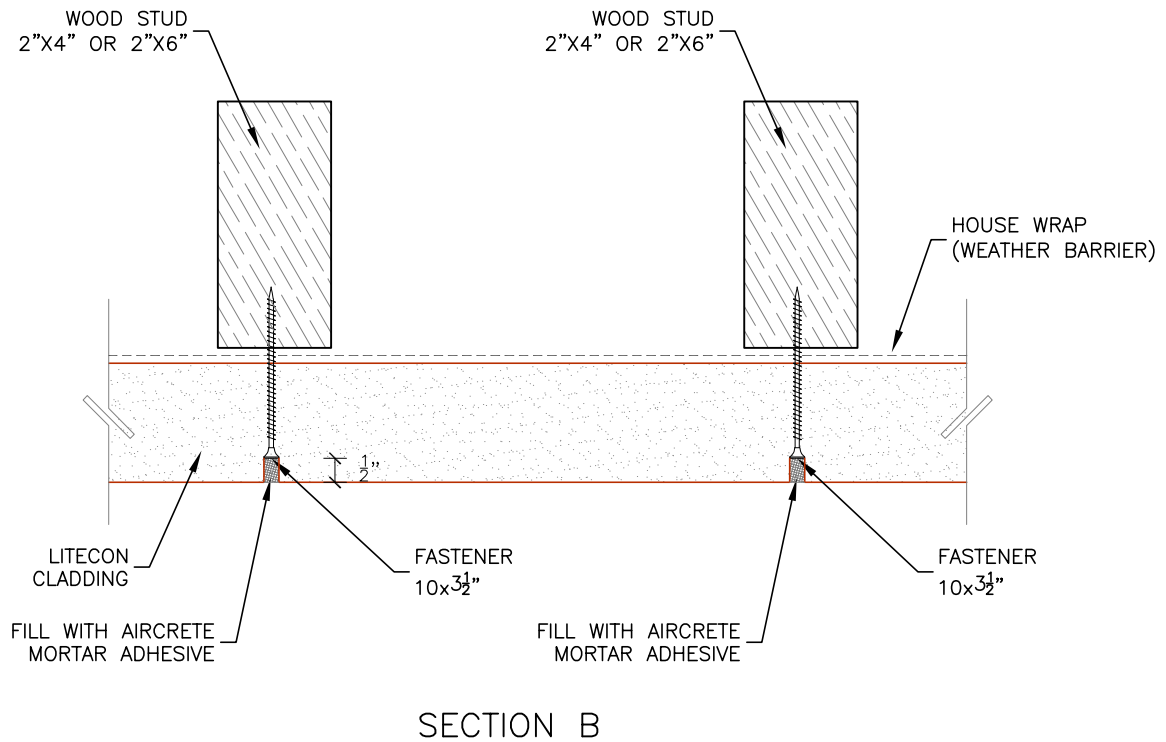
VERSION:

V11 220117

PAGE:

14

## WALLS FASTENERS DISTRIBUTION



FASTENERS HEADS MUST BE COUNTERSUNK  $\frac{1}{2}$ " INTO THE PANEL

### NOTES

- 1.- THE  $\frac{1}{2}$ " GAP GENERATED BY THE FASTENER MUST BE FILLED WITH ADHESIVE MORTAR TO PREVENT WATER INTRUSION TO THE STUD
- 2.- THE 2' X 4' PANEL MUST BE INSTALLED WITH 10 FASTENERS
- 3.- THE 2' X 7' PANEL MUST BE INSTALLED WITH 16 FASTENERS
- 4.- FASTENERS HEADS MUST BE COUNTERSUNK  $\frac{1}{2}$ " INTO THE PANEL
- 5.- **TAMLYNWRAP Drainable Wrap** OR **TYVEK DrainWrap** ARE RECOMMENDED AS A WEATHER BARRIER

# CONSTRUCTION DETAILS



PRODUCT:

**CLADDING**

AREA:

**ENGINEERING**

ELABORATED:

**V.G.C.**

REVISED:

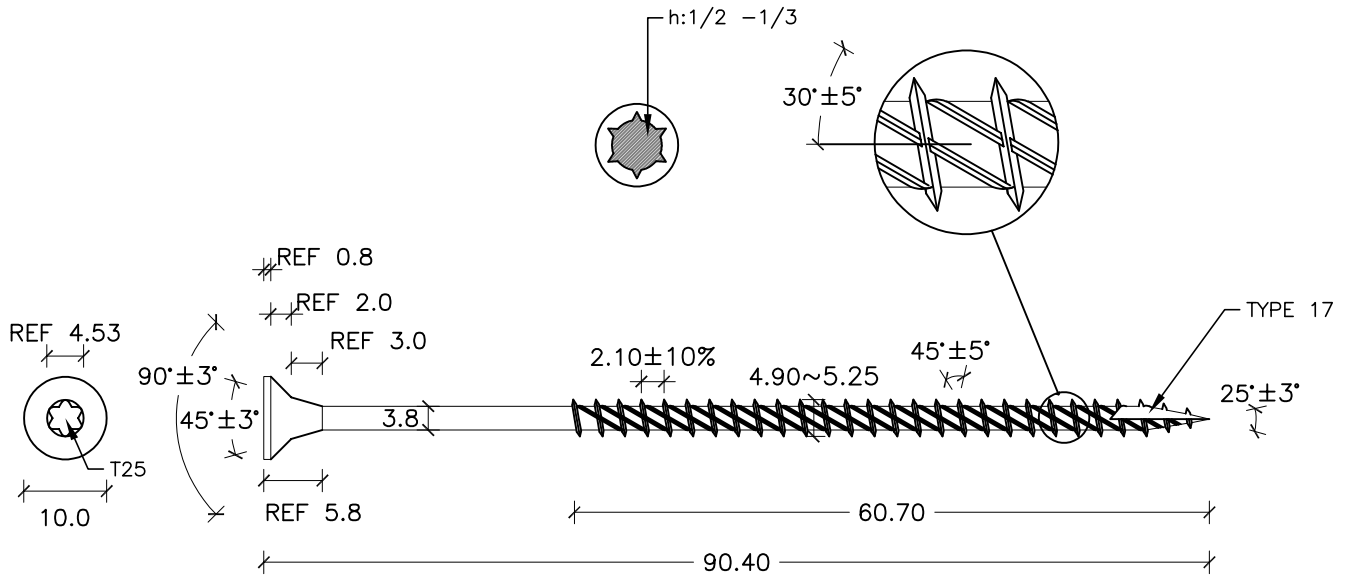
VERSION:

**V11 220117**

PAGE:

**15**

## FASTENERS SPECIFICATION FOR WOOD STUD



Size	Count Per Box	Lbs. per Box	SKU
10 x 3 1/2"	1 M	19	680-200

Material	C1018 Steel
Torsional Strength	56kg-cm min.
Shear Strength	1200 lbs min.
Pullout (plywood)	>340 psi.

### Premium Ceramic - Star Drive

Dual Coarse Thread, Gold, Type 17 Point  
 1000 Hour Long Life Ceramic Coating and heavy gauge for tough jobs. Dual thread design to greatly reduce splitting. Positive drives every time. Virtually eliminates need for pre-drilling. Counter-sunk head with nibs for a clean finish. For exterior use including decks, railings and other projects where rust resistance is important.

## NOTES

- 1.- THE FASTENERS SHOULD HAVE A COATING THAT PROVIDES CORROSION RESISTANCE
- 2.- THE FASTENERS SHOULD HAVE A TYPE 17 POINT FOR WOOD STUD
- 3.- **FASTENAL OR DECKMATE** FASTENERS ARE RECOMMENDED

# CONSTRUCTION DETAILS



PRODUCT:

## CLADDING

AREA:

ENGINEERING

ELABORATED:

V.G.C.

REVISED:

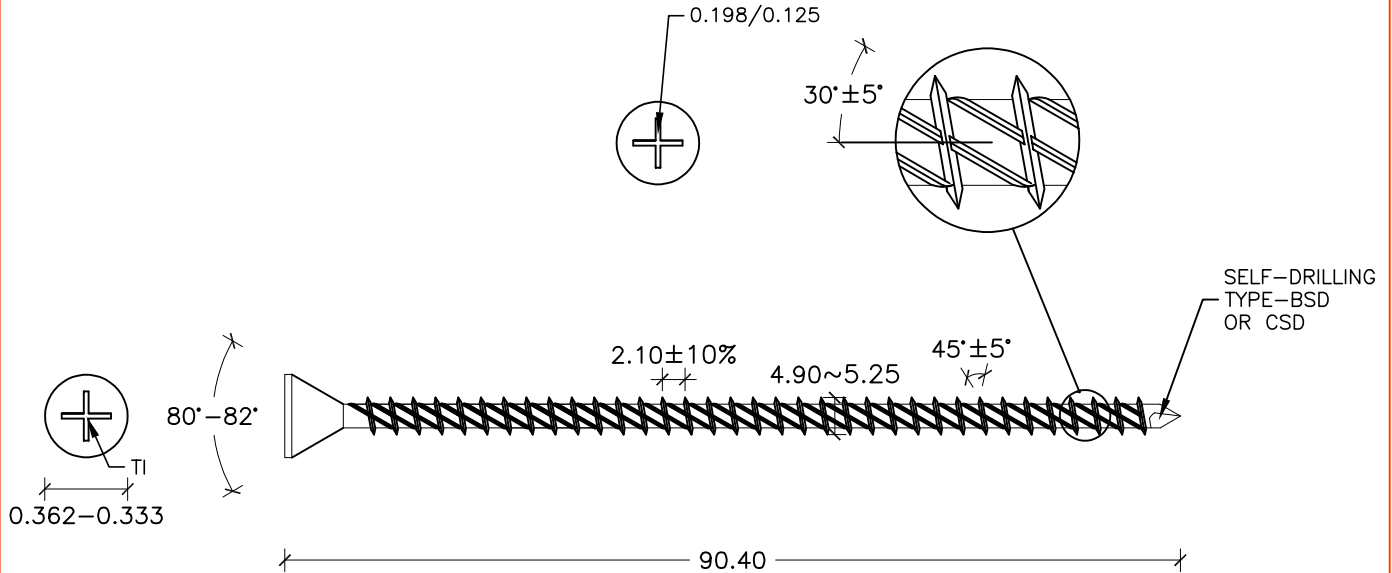
VERSION:

V11 220117

PAGE:

16

### FASTENERS SPECIFICATION FOR STEEL STUD



Size	Count Per Box	Lbs. per Box
10 x 3 1/2"	1 M	19

**Zinc Plated Steel - Self-drill**

A tapping screw with spaced threads and drill point which drills it's own hole, screws shall be quenched in liquid and then tempered by reheating to 625°F minimum.

Material	AISI 1016- 1024
Torsional Strenght	61 lb-in min.
Shear Strenght	1200 lbs min.
Pullout (plywood)	>340 psi.

### NOTES

- 1.- THE FASTENERS SHOULD HAVE A COATING THAT PROVIDES CORROSION RESISTANCE
- 2.- THE FASTENERS SHOULD HAVE A SELF DRILLING POINT FOR STEEL STUD
- 3.- **FASTENAL** OR **DECKMATE** FASTENERS ARE RECOMMENDED

# CONSTRUCTION DETAILS



PRODUCT:

## CLADDING

AREA:

ENGINEERING

ELABORATED:

V.G.C.

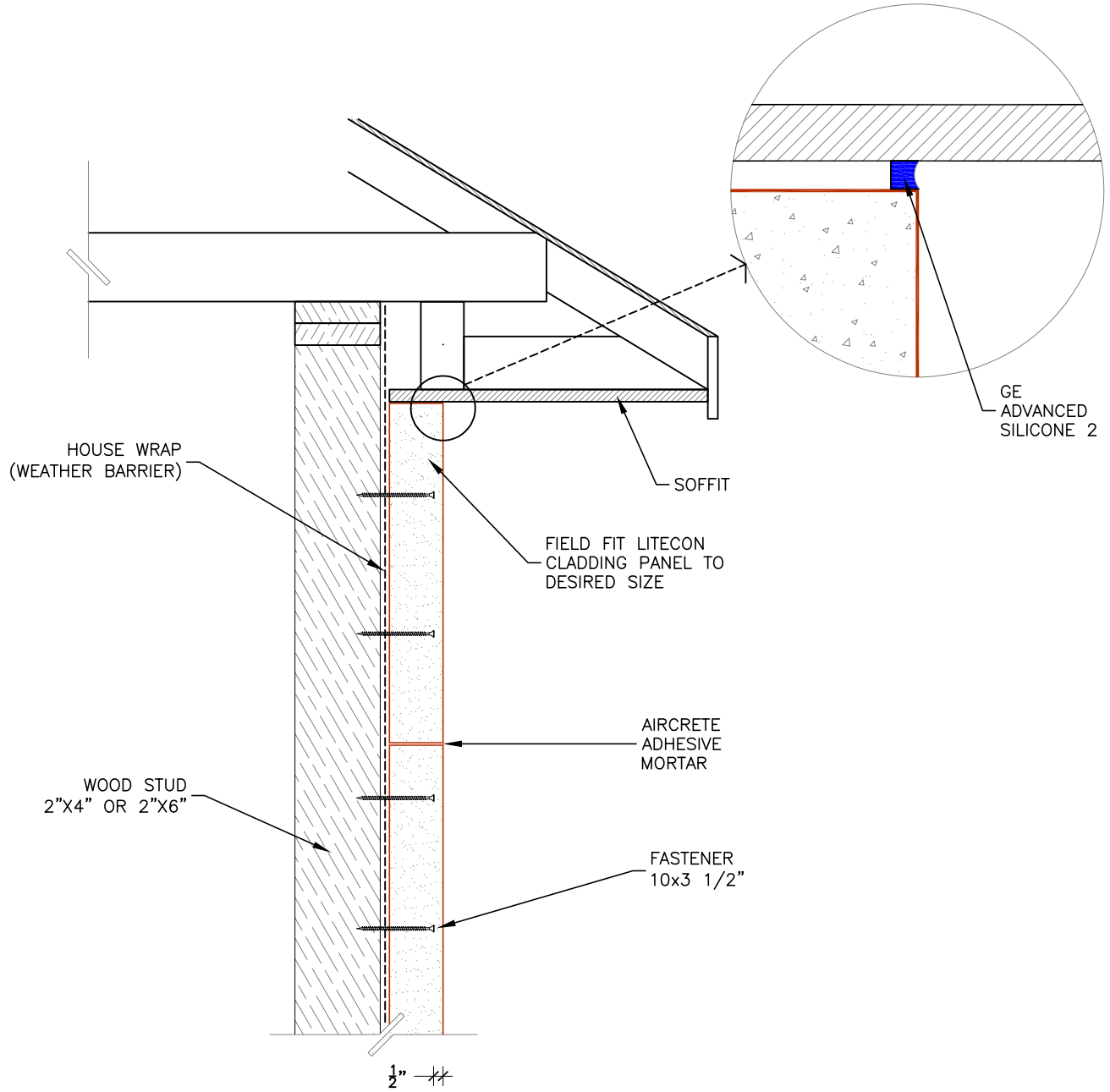
REVISED:

VERSION:

V11 220117

PAGE:

17



CEILING FINISHES

### NOTES

1.- TAMLYNWRAP Drainable Wrap OR TYVEK DrainWrap ARE RECOMMENDED AS A WEATHER BARRIER



# CONSTRUCTION DETAILS



PRODUCT:

**CLADDING**

AREA:

**ENGINEERING**

ELABORATED:

**V.G.C.**

REVISED:

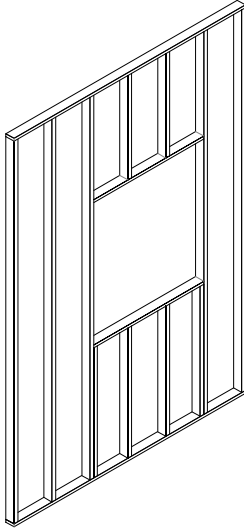
VERSION:

**V11 220117**

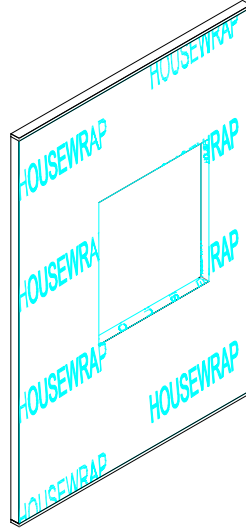
PAGE:

**18**

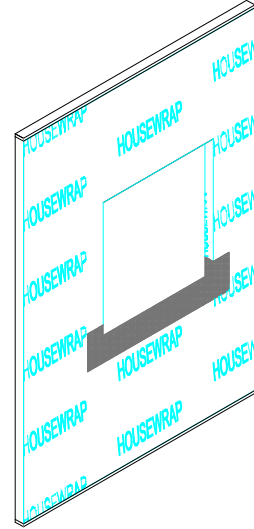
1.- STANDARD STUD DISTRIBUTION FOR WINDOWS



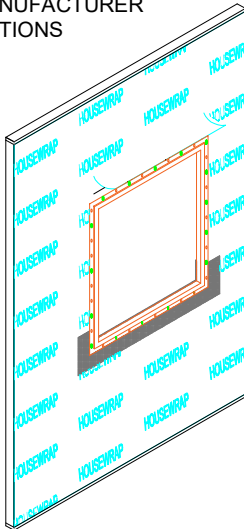
2.- INSTALL WEATHER BARRIER (HOUSEWRAP), RETURN WRAP TO INTERIOR & STAPLE



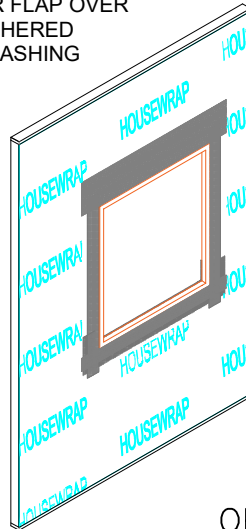
3.- INSTALL 12" SELF-ADHERED SILL FLASHING OVER TOP OF 2X SILL & CONT. 1/4" BACK DAM.



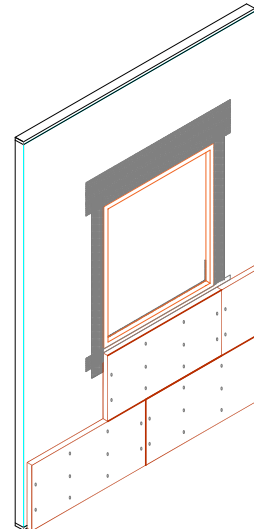
4.- SLIT WEATHER BARRIER VERTICALLY IN THE LINE, ATTACH WINDOW IN STRICT CONFORMANCE WITH MANUFACTURER INSTRUCTIONS



5.- INSTALL SELF-ADHERED SILL OVER WINDOW FLANGE AT EACH SIDE, FOLD WEATHER BARRIER FLAP OVER SELF-ADHERED HEAD FLASHING



6.- INSTALL LITECON CLADDING



**OPENINGS  
WINDOWS**

## NOTES

1.- TAMLYNWRAP Drainable Wrap OR TYVEK DrainWrap ARE RECOMMENDED AS A WEATHER BARRIER

# CONSTRUCTION DETAILS



PRODUCT:

**CLADDING**

AREA:

ENGINEERING

ELABORATED:

V.G.C.

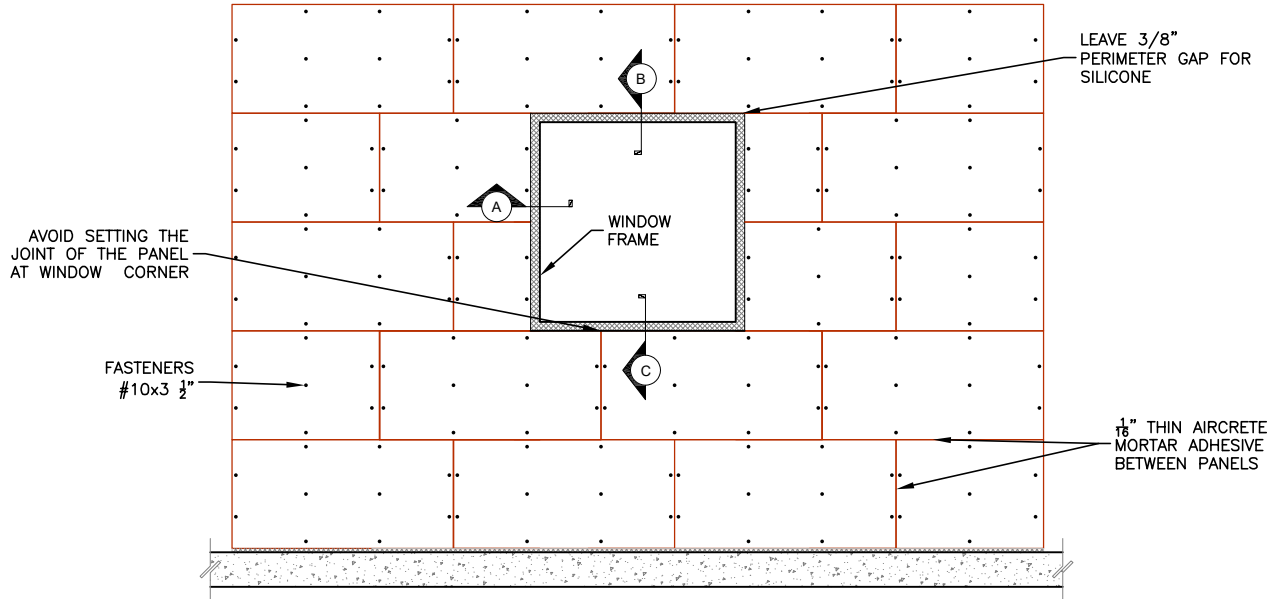
REVISED:

VERSION:

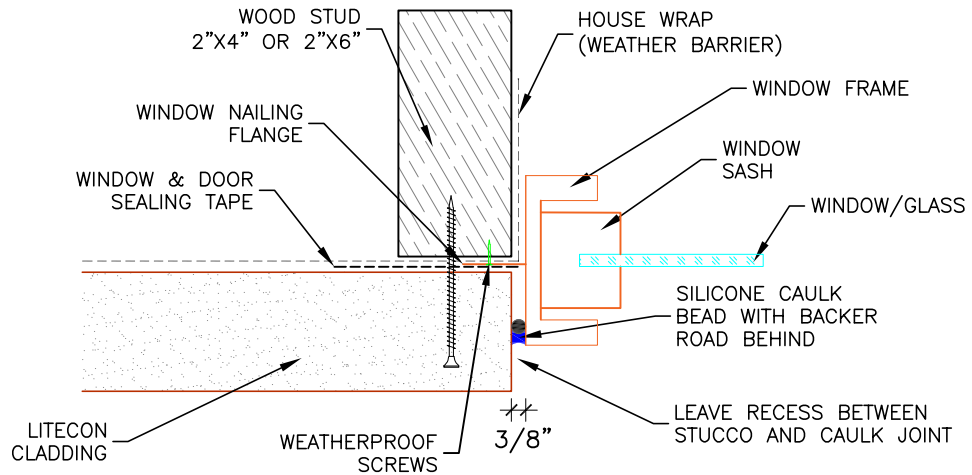
V11 220117

PAGE:

19



## SECTION A



## OPENINGS WINDOWS

### NOTES

- 1.- TAMLYNWRAP Drainable Wrap OR TYVEK DrainWrap ARE RECOMMENDED AS A WEATHER BARRIER

# CONSTRUCTION DETAILS



PRODUCT:

## CLADDING

AREA:

**ENGINEERING**

ELABORATED:

**V.G.C.**

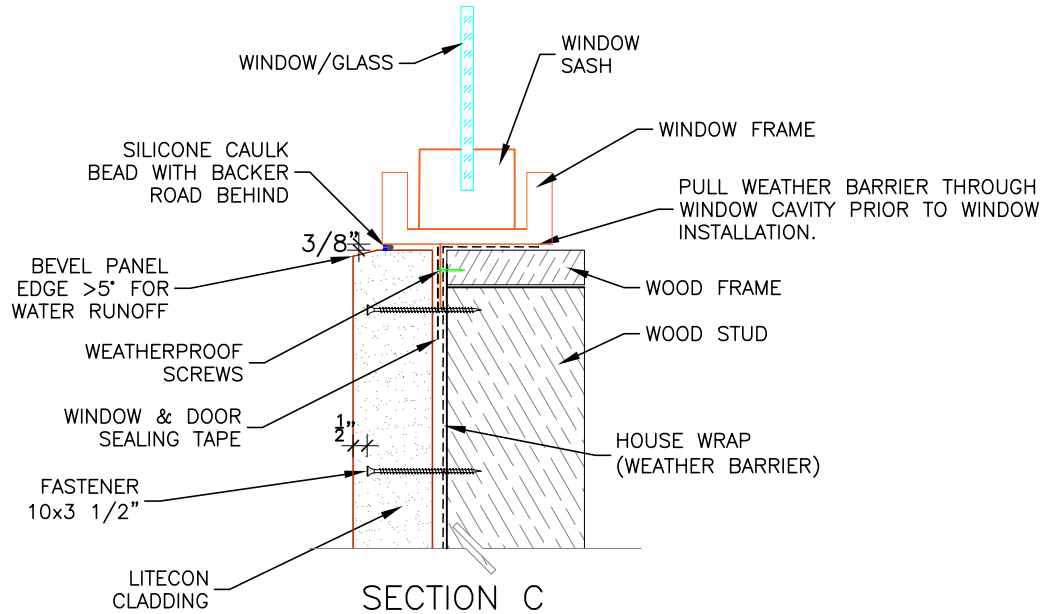
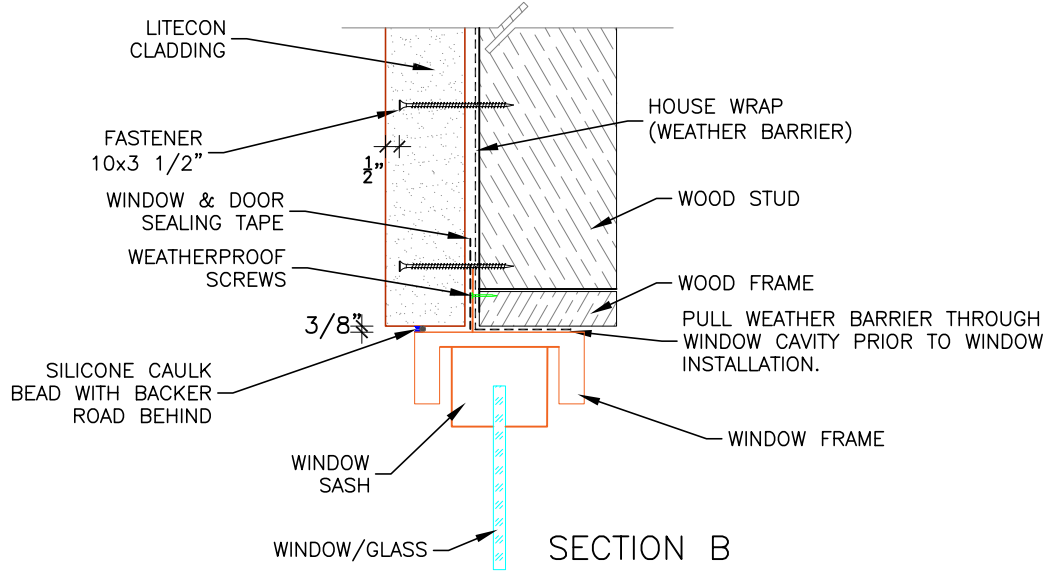
REVISED:

VERSION:

**V11 220117**

PAGE:

**20**



### OPENINGS WINDOWS

#### NOTES

1.- TAMLYNWRAP Drainable Wrap OR TYVEK DrainWrap ARE RECOMMENDED AS A WEATHER BARRIER

# CONSTRUCTION DETAILS



PRODUCT:

## CLADDING

AREA:

ENGINEERING

ELABORATED:

V.G.C.

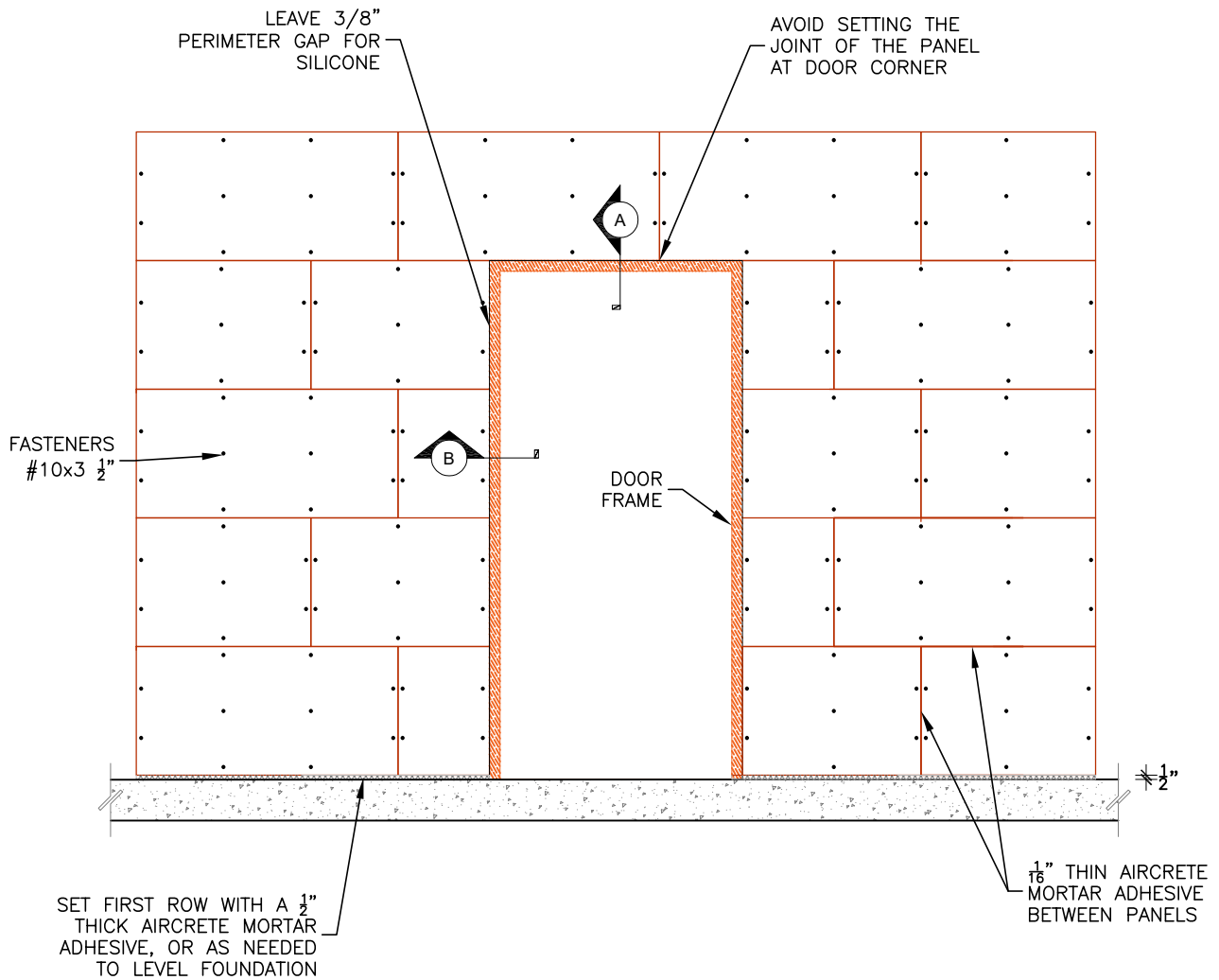
REVISED:

VERSION:

V11 220117

PAGE:

21



### OPENINGS DOORS

#### NOTES

- 1.- TAMLYNWRAP Drainable Wrap OR TYVEK DrainWrap ARE RECOMMENDED AS A WEATHER BARRIER

# CONSTRUCTION DETAILS



PRODUCT:

## CLADDING

AREA:

ENGINEERING

ELABORATED:

V.G.C.

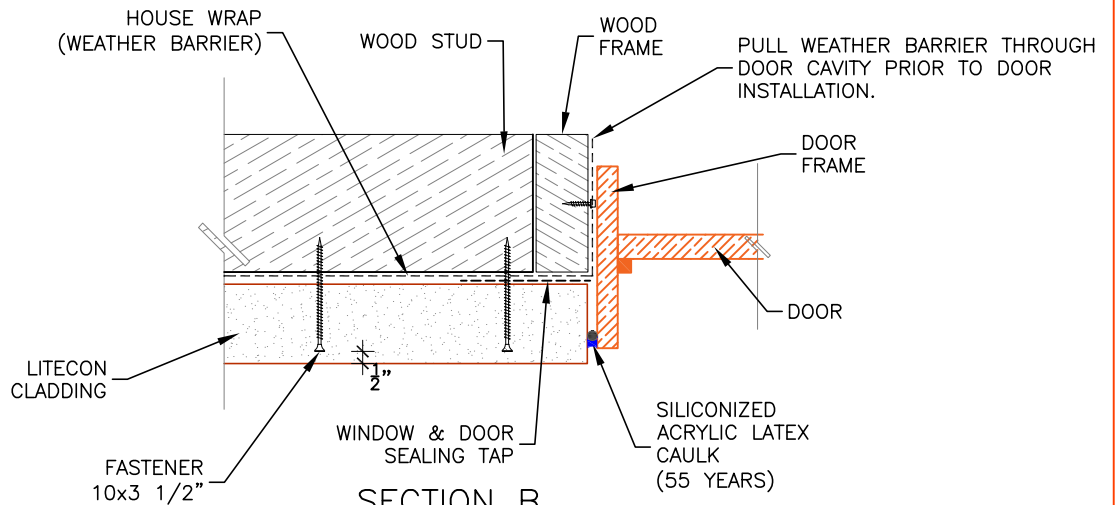
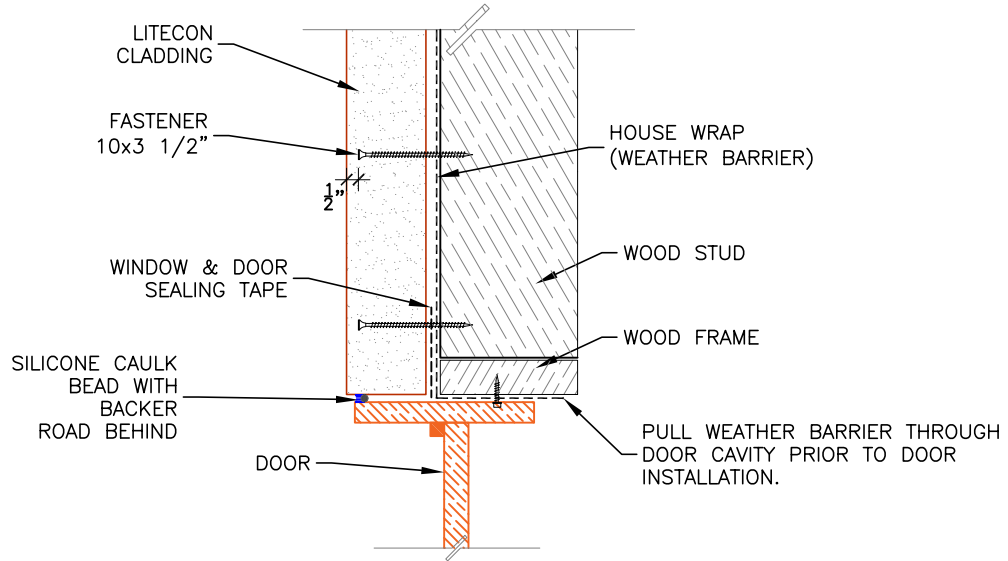
REVISED:

VERSION:

V11 220117

PAGE:

22



### OPENINGS DOORS

#### NOTES

1.- TAMLYNWRAP Drainable Wrap OR TYVEK DrainWrap ARE RECOMMENDED AS A WEATHER BARRIER

# CONSTRUCTION DETAILS



PRODUCT:

**CLADDING**

AREA:

ENGINEERING

ELABORATED:

V.G.C.

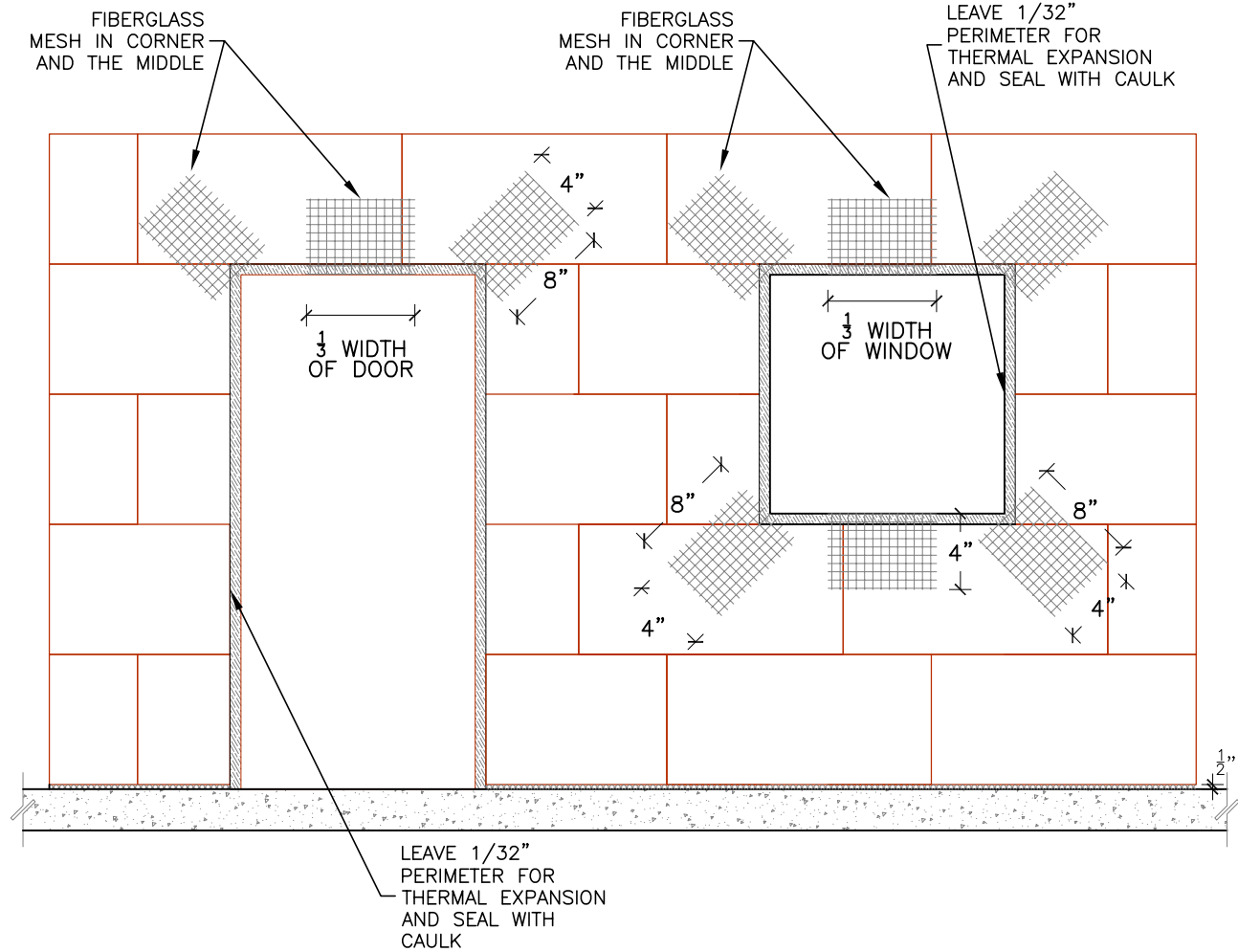
REVISED:

VERSION:

V11 220117

PAGE:

23



## FINAL STEPS FIBERGLASS MESH

### NOTES

- 1.- FOR DOOR AND WINDOW CORNERS AND REPAIRS, USE SELF-ADHESIVE FIBER GLASS MESH ALKALI RESISTANCE AND HIGH HUMIDITY RESISTANT **ADFORS (SAINT-GOBAIN)**, CEMENT BOARD FIBER TAPE
- 2.- IT IS ADVISABLE TO USE A FIBERGLASS MESH ACCORDING TO THE BASE COAT SYSTEM, FOR MORE INFORMATION CONSULT THE MANUFACTURER'S INSTALLATION GUIDES
- 3.- THE BASE COAT SYSTEMS RECOMMENDED ARE **STO, PAREX, LAHABRA, TEIFS, DRYVIT, DECOPLAST, FACADESXI** OR **SENERGY**. CHECK MANUFACTURER'S INSTALLATION GUIDES FOR THICKNESS OF BASE COAT SYSTEM AND STUCCO FINISH

# CONSTRUCTION DETAILS



PRODUCT:

CLADDING

AREA:

ENGINEERING

ELABORATED:

V.G.C.

REVISED:

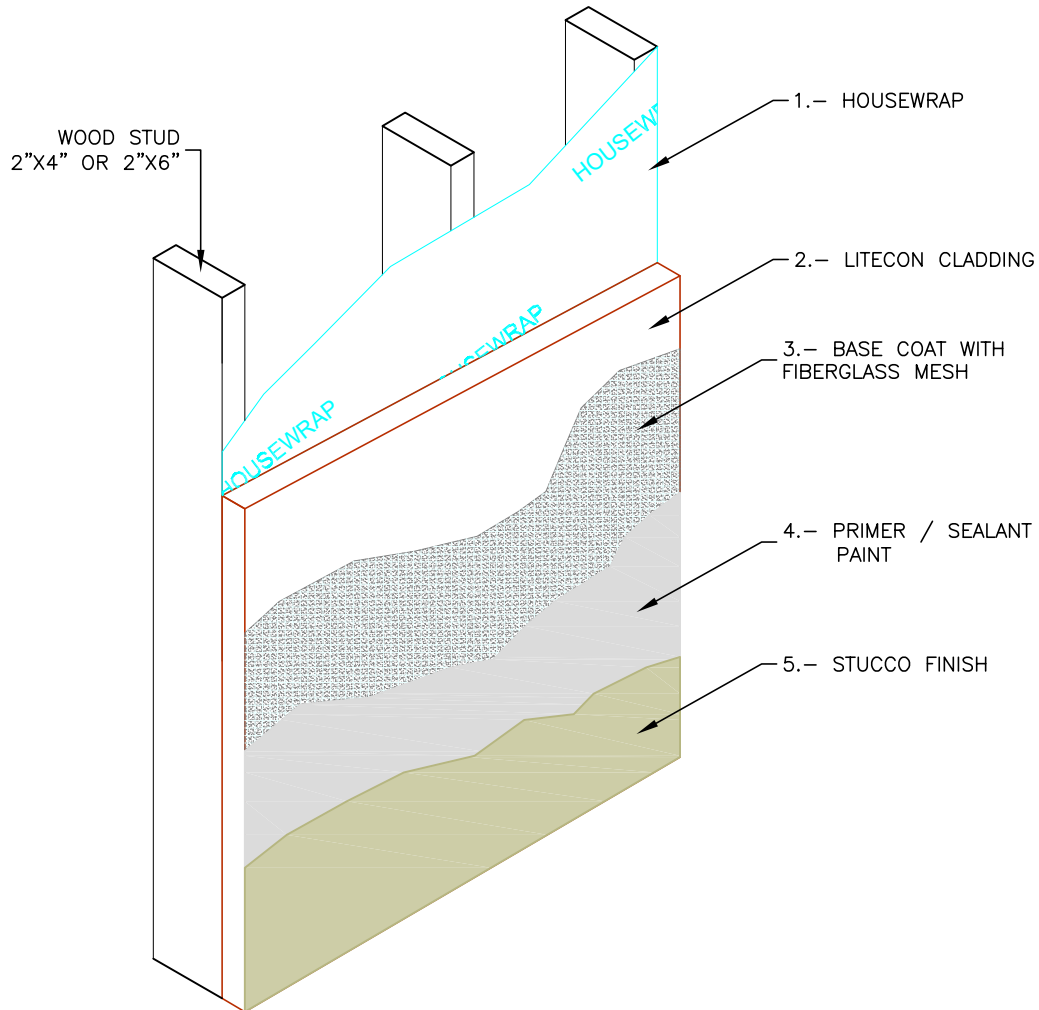
VERSION:

V11 220117

PAGE:

24

## FINAL STEPS FINISHES



### NOTES

- 1.- FOR DOOR AND WINDOW CORNERS AND REPAIRS, USE SELF-ADHESIVE FIBER GLASS MESH ALKALI RESISTANCE AND HIGH HUMIDITY RESISTANT **ADFORS (SAINT-GOBAIN)**, CEMENT BOARD FIBER TAPE
- 2.- IT IS ADVISABLE TO USE A FIBERGLASS MESH ACCORDING TO THE BASE COAT SYSTEM, FOR MORE INFORMATION CONSULT THE MANUFACTURER'S INSTALLATION GUIDES
- 3.- THE BASE COAT SYSTEMS RECOMMENDED ARE **STO, PAREX, LAHABRA, TEIFS, DRYVIT, DECOPLAST, FACADESXI** OR **SENERGY**. CHECK MANUFACTURER'S INSTALLATION GUIDES FOR THICKNESS OF BASE COAT SYSTEM AND STUCCO FINISH

# CONSTRUCTION DETAILS



PRODUCT:

CLADDING

AREA:

ENGINEERING

ELABORATED:

V.G.C.

REVISED:

VERSION:

V11 220117

PAGE:

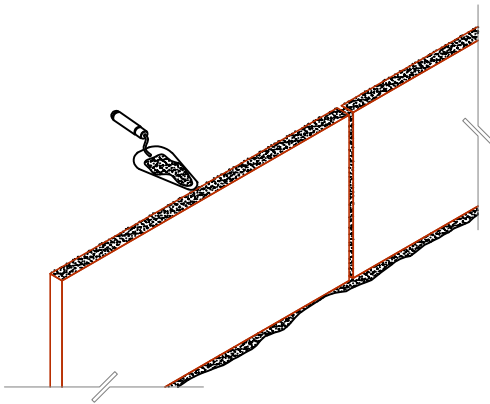
25

## AIRCRETE MORTAR ADHESIVE

- 1.- MIX 4/5 gal OF WATER FOR EACH 55 lb OF AIRCRETE ADHESIVE. MIX TO OBTAIN A UNIFORM WORKABLE CONSISTENCY WITH NO CLUMPS. LET REST FOR 5 MINUTES, MIX AGAIN AND APPLY.

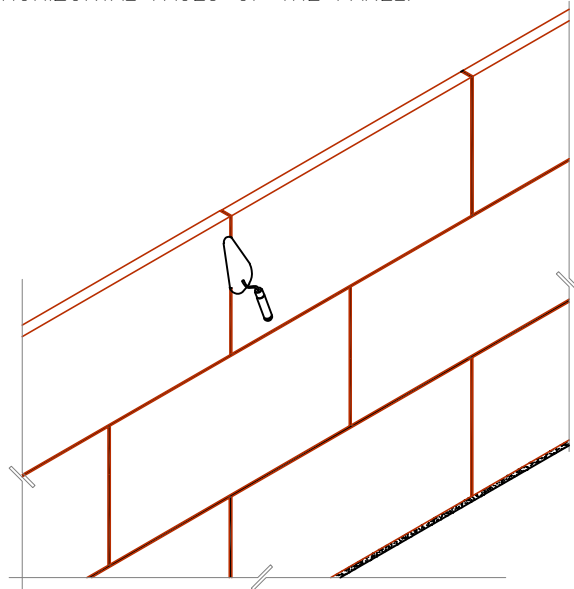


+



- 2.- APPLY 1/2" THICK OR AS NEEDED TO LEVEL FOUNDATION.
- 3.- APPLY A 1/16" LAYER WITH A TROWEL ON VERTICAL AND HORIZONTAL FACES OF THE PANEL.

- 4.- LEVEL AND SMOOTH JOINTS BETWEEN PANELS USING A THIN LAYER OF THE MORTAR



## NOTES

- 1.- ALLOW AIRCRETE MORTAR TO DRY FOR A MINIMUM OF 24 HOURS PRIOR TO APPLYING ANY LOAD



## CONSTRUCTION DETAILS



PRODUCT:

CLADDING

AREA:

ENGINEERING

ELABORATED:

V.G.C.

REVISED:

VERSION:

V11 220117

PAGE:

27

# FAQ'S

Q. WHAT DO I NEED TO CHECK BEFORE I START?

A. – MAKE SURE THE SLAB OR FOUNDATION HAS A BRICK LEDGE OR IRON ANGLE

– HAVE ALL THE NECESSARY MATERIALS AND TOOLS

– HAVE A CUTTING AREA

Q. HOW DO I PREPARE THE AIRCRETE ADHESIVE?

A. IN A 5 GALLON BUCKET PUT 2 INCHES OF CLEAN WATER, POUR HALF OF A BAG OF AIRCRETE ADHESIVE AND STIR UNTIL THERE ARE NO LUMPS, LET IT REST FOR 5 MINUTES AND GIVE A LAST STIR

Q. HOW MUCH AIRCRETE ADHESIVE SHOULD I PREPARE?

A. IT IS RECOMMENDED TO PREPARE HALF A BAG SO IT DOESN'T DRY OUT

Q. HOW CAN I LEVEL THE FIRST ROW?

A. YOU CAN LEVEL WITH AN S TYPE MORTAR, AIRCRETE ADHESIVE OR A MIX OF BOTH

Q. WHAT SHOULD I DO IF THE EDGE OF THE LITECON CLADDING IS NOT ON A STUD?

A. THERE ARE TWO ALTERNATIVES, THE FIRST ONE IS TO CUT THE LITECON CLADDING AND THE SECOND IS TO PUT AN ADDITIONAL STUD FIXED TO THE EXISTING ONE

Q. IF A WINDOW IS NOT LEVEL, CAN THE LITECON CLADDING BE CUT PARALLEL TO IT?

A. YES IT CAN

Q. PIECES LEFT OVER FROM CUTS CAN BE USED IN OTHER AREAS?

A. YES, THEY CAN BE USED

## NOTES

# CONSTRUCTION DETAILS



PRODUCT:

CLADDING

AREA:

ENGINEERING

ELABORATED:

V.G.C.

REVISED:

VERSION:

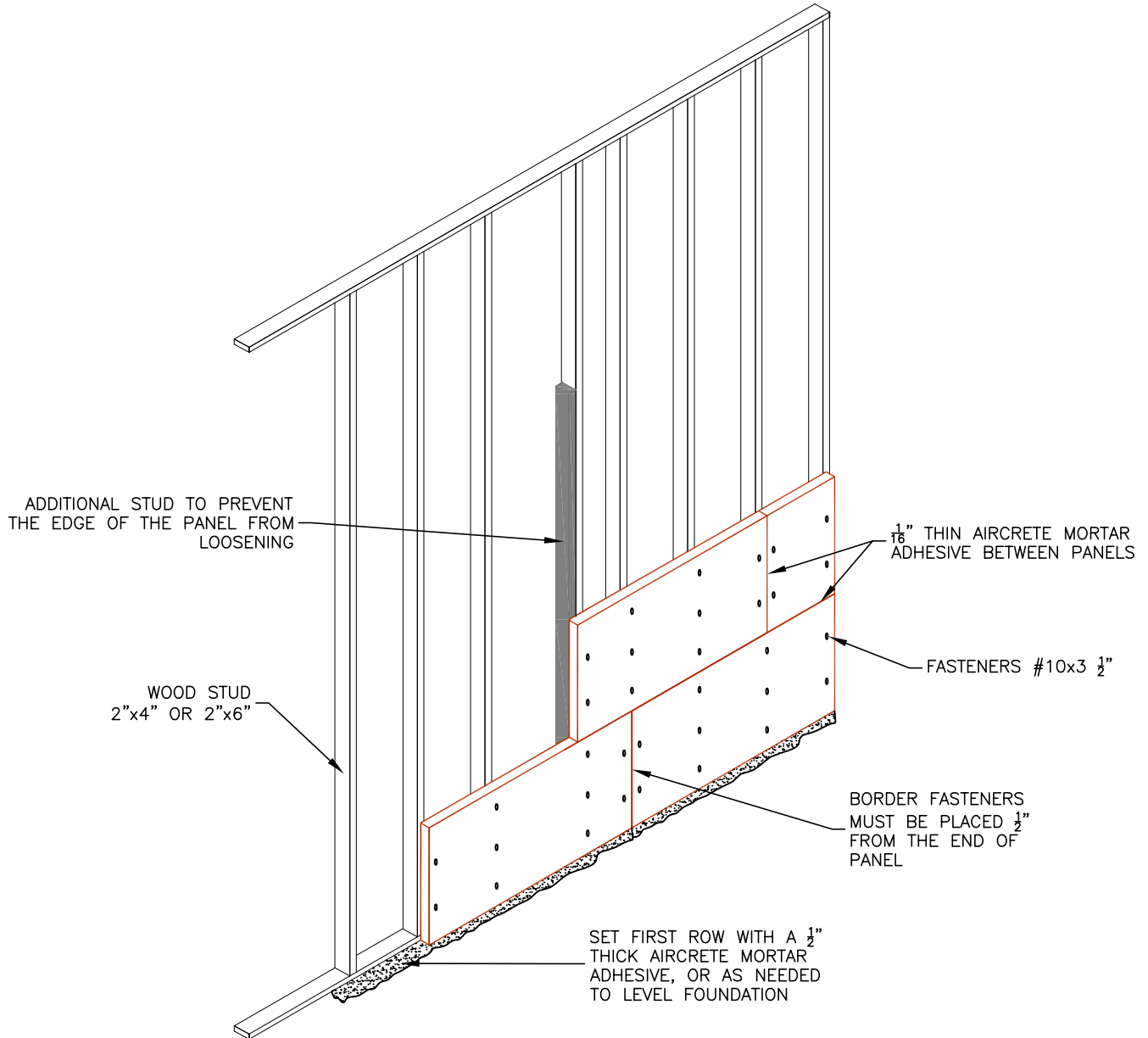
V11 220117

PAGE:

28

## WALLS

PLACEMENT OF ADDITIONAL STUD WHEN THE EDGE OF THE PANEL IS NOT ALIGNED WITH A STUD



## NOTES

- 1.- THE FIRST ROW CAN ALSO BE LEVELLED WITH TRADITIONAL TYPE S MORTAR OR A MIX OF MORTAR AND AIRCRETE ADHESIVE
- 2.- THE  $\frac{1}{2}$ " GAP GENERATED BY THE FASTENER MUST BE FILLED WITH ADHESIVE MORTAR TO PREVENT WATER INTRUSION TO THE STUD

# CONSTRUCTION DETAILS



PRODUCT:

CLADDING

AREA:

ENGINEERING

ELABORATED:

V.G.C.

REVISED:

VERSION:

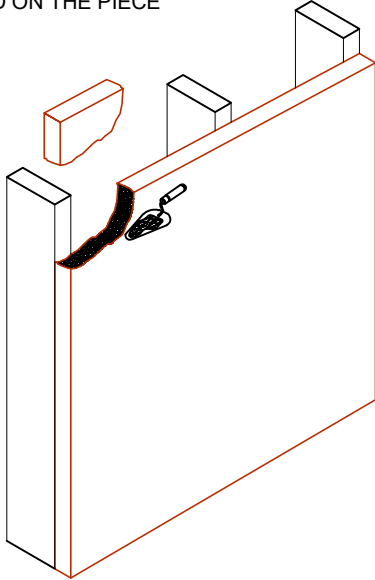
V11 220117

PAGE:

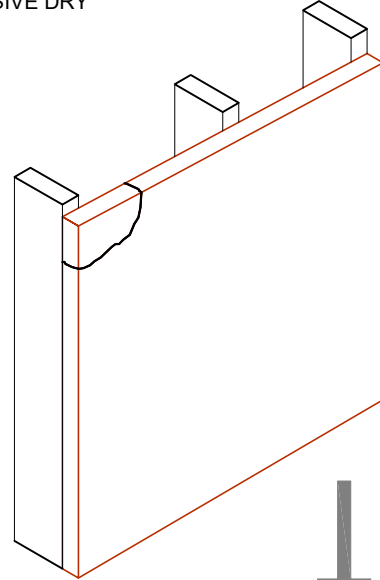
29

## CRACKS REPAIRING

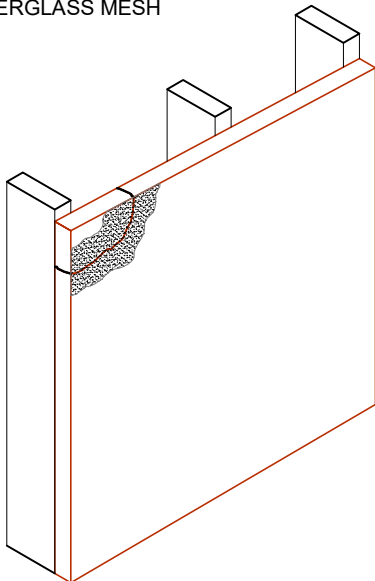
1.- PLACE AIRCRETE ADHESIVE ON LITECON CLADDING AND ON THE PIECE



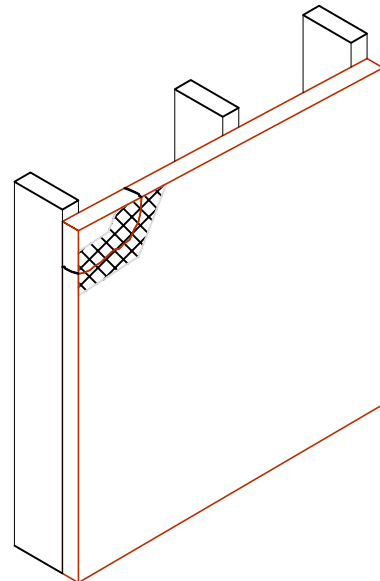
2.- PLACE THE PIECE ON AND LET THE AIRCRETE ADHESIVE DRY



4.- PLACE AIRCRETE ADHESIVE MESH OVER THE FIBERGLASS MESH



3.- PLACE FIBERGLASS MESH OVER THE UNION



## NOTES

- 1.- FOR DOOR AND WINDOW CORNERS AND REPAIRS, USE SELF-ADHESIVE FIBER GLASS MESH ALKALI RESISTANCE AND HIGH HUMIDITY RESISTANT **ADFORS (SAINT-GOBAIN)**, CEMENT BOARD FIBER TAPE
- 2.- IT IS ADVISABLE TO USE A FIBERGLASS MESH ACCORDING TO THE BASE COAT SYSTEM, FOR MORE INFORMATION CONSULT THE MANUFACTURER'S INSTALLATION GUIDES
- 3.- THE BASE COAT SYSTEMS RECOMMENDED ARE **STO, PAREX, LAHABRA, TEIFS, DRYVIT, DECOPLAST, FACADESXI** OR **SENERGY**. CHECK MANUFACTURER'S INSTALLATION GUIDES FOR THICKNESS OF BASE COAT SYSTEM AND STUCCO FINISH

# CONSTRUCTION DETAILS



PRODUCT:

CLADDING

AREA:

ENGINEERING

ELABORATED:

V.G.C.

REVISED:

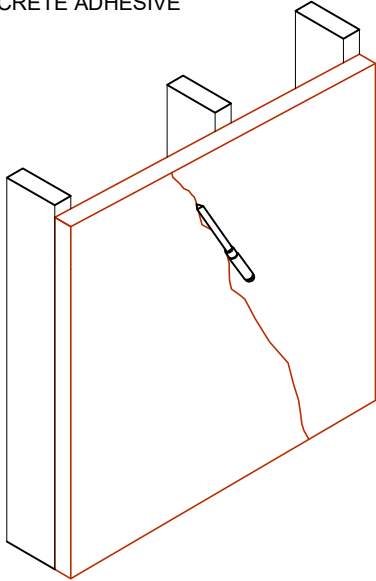
VERSION:

V11 220117

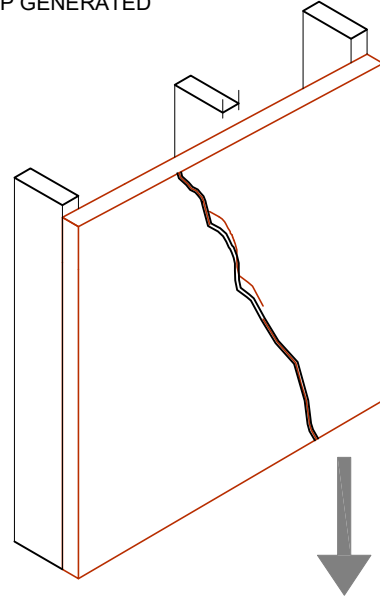
PAGE:

30

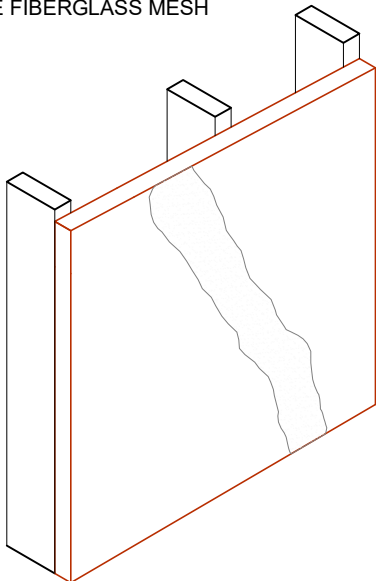
1.- SCRATCH THE FISSURE TO MAKE ROOM FOR THE AIRCRETE ADHESIVE



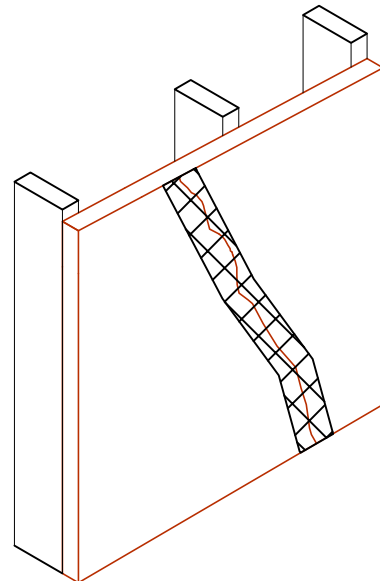
2.- PLACE AIRCRETE ADHESIVE ON THE GAP GENERATED



4.- PLACE AIRCRETE ADHESIVE MESH OVER THE FIBERGLASS MESH



3.- PLACE FIBERGLASS MESH OVER THE FISSURE



## NOTES

- 1.- FOR DOOR AND WINDOW CORNERS AND REPAIRS, USE SELF-ADHESIVE FIBER GLASS MESH ALKALI RESISTANCE AND HIGH HUMIDITY RESISTANT **ADFORS (SAINT-GOBAIN)**, CEMENT BOARD FIBER TAPE
- 2.- IT IS ADVISABLE TO USE A FIBERGLASS MESH ACCORDING TO THE BASE COAT SYSTEM, FOR MORE INFORMATION CONSULT THE MANUFACTURER'S INSTALLATION GUIDES
- 3.- THE BASE COAT SYSTEMS RECOMMENDED ARE **STO, PAREX, LAHABRA, TEIFS, DRYVIT, DECOPLAST, FACADESXI** OR **SENERGY**. CHECK MANUFACTURER'S INSTALLATION GUIDES FOR THICKNESS OF BASE COAT SYSTEM AND STUCCO FINISH

# CONSTRUCTION DETAILS



PRODUCT:

CLADDING

AREA:

ENGINEERING

ELABORATED:

V.G.C.

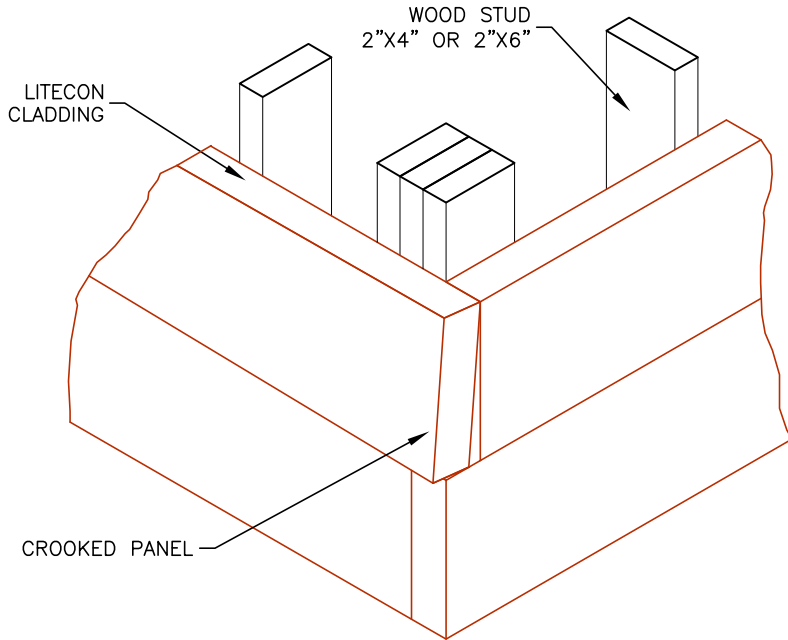
REVISED:

VERSION:

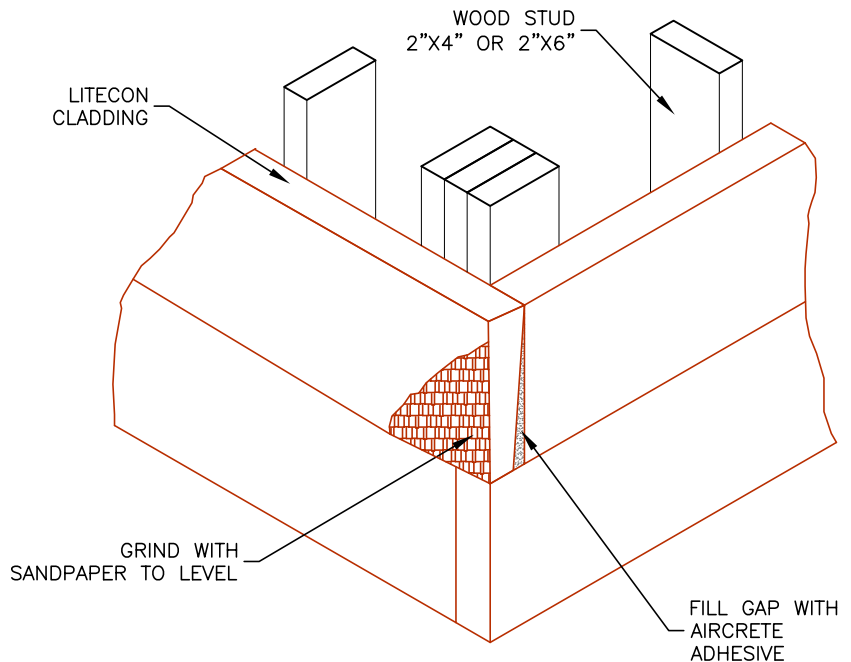
V11 220117

PAGE:

31



## CROOKED CORNER REPAIRING



### NOTES

- 1.- FOR DOOR AND WINDOW CORNERS AND REPAIRS, USE SELF-ADHESIVE FIBER GLASS MESH ALKALI RESISTANCE AND HIGH HUMIDITY RESISTANT **ADFORS (SAINT-GOBAIN)**, CEMENT BOARD FIBER TAPE
- 2.- IT IS ADVISABLE TO USE A FIBERGLASS MESH ACCORDING TO THE BASE COAT SYSTEM, FOR MORE INFORMATION CONSULT THE MANUFACTURER'S INSTALLATION GUIDES
- 3.- THE BASE COAT SYSTEMS RECOMMENDED ARE **STO, PAREX, LAHABRA, TEIFS, DRYVIT, DECOPLAST, FACADESXI** OR **SENERGY**. CHECK MANUFACTURER'S INSTALLATION GUIDES FOR THICKNESS OF BASE COAT SYSTEM AND STUCCO FINISH